

# THE KATRINA INDEX

APRIL 12, 2007



## TRACKING RECOVERY

OF NEW ORLEANS & THE METRO AREA

“New Orleans may have turned a corner with the unveiling of its \$1.1 billion recovery plan that emphasizes the redevelopment of targeted commercial corridors to attract private investment. Meanwhile, indicators suggest that the rebuilding of New Orleans’ essential infrastructure is basically stalled as federal recovery dollars remain mired in red tape. Housing indicators are mixed at best, but economic indices suggest a notable strengthening of the economy in the New Orleans metro area.”

Updated Monthly • [www.gnocdc.org](http://www.gnocdc.org)

Please direct media inquiries to Allison Plyer at [www.gnocdc.org/media](http://www.gnocdc.org/media) for speediest response. Or, call (504) 304-8260 x225.

# TABLE OF CONTENTS

<b>About the Index</b> .....	<b>4</b>
<b>I Summary of Findings: April 2007</b> .....	<b>5</b>
<b>II Key Tracking Figures</b> .....	<b>8</b>
<b>III Housing</b> .....	<b>25</b>
Table 1: Average Home Sale Price for Single Family Homes in New Orleans Metro Area .....	26
Table 2: Number of Single Family Home Sales in New Orleans Metro Area .....	27
Table 3: Fair Market Rents in New Orleans MSA, by Unit Bedrooms .....	27
Table 4: Number of Residential Properties for Sale in New Orleans MSA, by Parish .....	28
Table 5: Cumulative Number of Army Corps Building Demolitions, by Parish .....	28
Table 6: Cumulative Number of Residential Building Permits Issued by New Orleans City Hall .....	29
Table 7: Number of New Residential Housing Units Authorized, by Type of Home .....	30
Table 8: Status of Louisiana Road Home Applications.....	30
Table 9: Anticipated Use of Funds for Road Home Applicants, by Parish.....	31
<b>IV Population</b> .....	<b>32</b>
Table 10: Total Population Estimates .....	33
Table 11: Non-Group Quarters Population Estimates .....	33
Table 12: College Students Enrolled in New Orleans, by University .....	33
Table 13: Public School Enrollment Totals in New Orleans MSA, by Parish .....	33
<b>V Infrastructure</b> .....	<b>34</b>
Table 14: Status of Public Transportation in New Orleans.....	35
Table 15: Open Public Schools in New Orleans Metro, by Parish .....	36
Table 16: Open Public Libraries in New Orleans Metro, by Parish.....	37
Table 17: Open State-licensed Hospitals, by Parish.....	37
Table 18: Open Child Care Centers in Louisiana & Select Parishes .....	38
<b>VI Economy</b> .....	<b>39</b>
Table 19: Number of Unemployment Claims .....	40
Table 20: Unemployment Rates & Total Numbers .....	42
Table 21: Labor Force Size .....	43
Table 22a: Number of Non-farm Employed People in New Orleans MSA, Louisiana, & the U.S., by Industry: Totals. ....	44
Table 22b: Number of Non-farm Employed People in New Orleans MSA, Louisiana, & the U.S., by Industry: Service-Providing Industries .....	46
Table 22c: Number of Non-farm Employed People in New Orleans MSA, Louisiana, & the U.S., by Industry: Goods Producing Industries .....	48
Table 22d: Number of Non-farm Employed People in Government in New Orleans MSA, Louisiana, & the U.S., by Level of Government.....	50
Table 23a: Average Weekly Wage, by Industry Sectors A-F .....	52
Table 23b: Average Weekly Wage, by Industry Sectors H-O.....	53

Table 23c: Average Weekly Wage, by Industry Sectors P-W .....	54
Table 24a: Delinquency and Foreclosure Rates for Sub-prime Loans in Louisiana & the U.S. ....	55
Table 24b: Delinquency and Foreclosure Rates for Prime Loans in Louisiana & the U.S. ....	56
Table 24c: Delinquency and Foreclosure Rates for All Loans in Louisiana & the U.S. ....	57
Table 25: Quarterly Personal Income in Louisiana & the U.S. ....	58
Table 26: Number of Open Hotels in New Orleans .....	58
Table 27: Proportion of Open Retail Food Establishments in New Orleans Metro .....	59
Table 28: Number of Passengers Arriving & Departing from Louis Armstrong New Orleans International Airport.....	60
Table 29: Amount of Air Freight & Mail Transported Through Louis Armstrong New Orleans International Airport.	61
<b>VII Emergency Response .....</b>	<b>62</b>
Table 30a: Total FEMA Allocations and Obligations, by Type: A-I .....	63
Table 30b: Total FEMA Allocations and Obligations, by Type: M-U.....	64
Table 31: Number of Mobile Homes & Operational Travel Trailers .....	65
Table 32: Cumulative Number of Households Approved for Housing & Rental Assistance through the FEMA Individuals and Households Program.....	66

# ABOUT THE INDEX

Beginning in December 2005, the Katrina Index began monitoring the social and economic recovery of the Gulf Coast region, especially the New Orleans area, from the storm's impact in August 2005. Relying on nearly 40 indicators, the Index has aimed to provide members of the media, key decision makers, nonprofit and private sector groups, and researchers with an independent, fact-based, one-stop resource to monitor and evaluate the progress of on-the-ground recovery.

Starting in 2007, The Katrina Index is being released as a joint collaboration between the Greater New Orleans Community Data Center and the Brookings Institution Metropolitan Policy Program. The goal of this collaboration is to bring an even better, more tailored assessment of recovery to this Index's many users.

You will see a number of changes with the 2007 releases of the Index. First, the Index will now exclusively monitor progress in the City of New Orleans and her surrounding parishes, with data for Louisiana wherever possible. Second, you will see a streamlined set of indicators for tracking recovery, newly organized by the key facets of recovery, such as housing, population, services and infrastructure, economy, and emergency response.

Finally, now that the post-Katrina recovery effort is fully in its second year, the partnership between Brookings and the Greater New Orleans Community Data Center will also bring you access to new, state and locally-driven data sources, some of which will be mapped to visually demonstrate the extent to which different parts of the region, by neighborhood or other geographic measure, are benefiting from various aspects of recovery. This collaboration will also draw on more local insights as to the nature of the rebuilding efforts.

The Brookings Institution and the New Orleans Data Center will continue to release and update the Katrina Index on a monthly basis, likely on the second Wednesday of every month.

We continue to benefit from many of your comments and suggestions to this Index, including the offerings of additional data to be included in the Index. Please submit such comments and suggestions to [info@gnocdc.org](mailto:info@gnocdc.org).

Both the Data Center and Brookings would like to thank the Blue Moon Fund for their support of the Katrina Index beginning in 2007 and their commitment to providing a steady stream of quality information to the people of New Orleans as they seek to further the recovery of their area. Visit the Blue Moon Fund on the web at [www.bluemoonfund.org](http://www.bluemoonfund.org)

Finally, both the Data Center and Brookings would like to thank Living Cities, Inc.: The National Community Development Initiative for its founding support of the Katrina Index. Visit Living Cities on the web at [www.livingcities.org](http://www.livingcities.org).

**Cover credits:** Cover design and layout by Kathe Logan ([kathelogan.com](http://kathelogan.com)). Photo illustration based on a photograph by Toney Smith. Permission for use has been requested.

I

# SUMMARY OF FINDINGS

I

# SUMMARY OF FINDINGS: APRIL 2007

## *Months Since Katrina Made Landfall: 19*

This month Governor Kathleen Blanco announced she will not run for reelection. This decision could be seen as a critique of state leadership on recovery or a blessing that the governor will not be distracted by a tough re-election campaign and can focus on recovery issues for the remainder of her term.

But New Orleans may have turned a corner. Under the leadership of newly hired recovery czar Ed Blakely, a \$1.1 billion recovery plan was unveiled to widespread approval. The plan emphasizes the redevelopment of commercial corridors in seventeen areas of the city in order to attract homeowners and stabilize neighborhoods. The timeline calls for construction to begin as early as September 2007.

It is anticipated that this plan will add momentum to the recovery as interested investors finally have the guidance they need for where to invest in the city. Additionally, Blakely's Office of Recovery Management has pulled together a specific list of infrastructure repairs and upgrades for which it is seeking funding from the state.

But other infrastructure repairs, which by law are to be funded by federal sources, continue to be mired in red tape. For example, 298 essential public buildings in New Orleans, such as the Criminal District Court, remain unusable as onerous bureaucratic hurdles impede the dispersal of allocated federal funds.

As a whole, indicators suggest that the rebuilding of essential infrastructure is basically stalled, housing indicators remain mixed at best, but economic indices suggest a notable strengthening of the economy in New Orleans and in the metro area as a whole.

## HOUSING

- The number of residential properties on the market reached more than 14,000 this month. But consumer confidence in the area remains high as evidenced by single family home sales which at 848 in February continue at pre-Katrina levels.
- Monthly demolitions by the Army Corps of Engineers seem to have stabilized at only 150 per month—less than half of the 360 averaged in 2006.
- There were only 290 new residential housing permits across the metro area this past month—less than half of recent months.
- Still only 5.7 percent of Road Home applications have gone to closing. At its current pace, the contractor won't finish distributing the \$7.5 billion in federal homeowner assistance funds until June 2009.

## POPULATION

- Recently released Census estimates from July 1, 2006 indicate that almost half of the New Orleans population had returned to the city less than one year after the storm. And at that point, the metro area as a whole had regained 78 percent of its pre-storm population.
- But Orleans Parish public school enrollment figures for the spring 2007 semester were up only 514 students from fall 2006 figures—a smaller increase than expected. The other hurricane affected parishes experienced similarly modest growth in enrollment between the fall 2006 and spring 2007.

## INFRASTRUCTURE

- Public transportation recovery remains stalled with less than half of all routes open in New Orleans and only 17 percent of pre-Katrina buses running.
- One more public school opened in New Orleans this month, but 75 public schools remain closed in that parish.
- The number of open hospitals in New Orleans remains at 52 percent of pre-Katrina levels and has not changed in five months. There are still no hospitals open in St. Bernard Parish.
- Orleans, Plaquemines, and St. Tammany Parishes each gained one child care center this past month. But still 191 child care facilities remain closed in Orleans Parish. One more child care center closed this month in Jefferson Parish.

## ECONOMY

- The number of unemployment claims reached very low levels this past month—46 in New Orleans, 204 across the metro area. And unemployment rates in New Orleans (4 percent) and the metro (3.8 percent) remain well below the national level (4.5 percent) in February.
- Labor force numbers remained high this past month—at approximately 75 percent of pre-Katrina levels in both New Orleans itself and the metro area as a whole.
- Personal income in Louisiana rebounded in 2006 resulting in total growth of 19.4 percent compared to 2005—as rental incomes increased and earnings continued to grow in the oil, natural gas, and construction industries.

— *The Brookings Institution Metropolitan Policy Program*

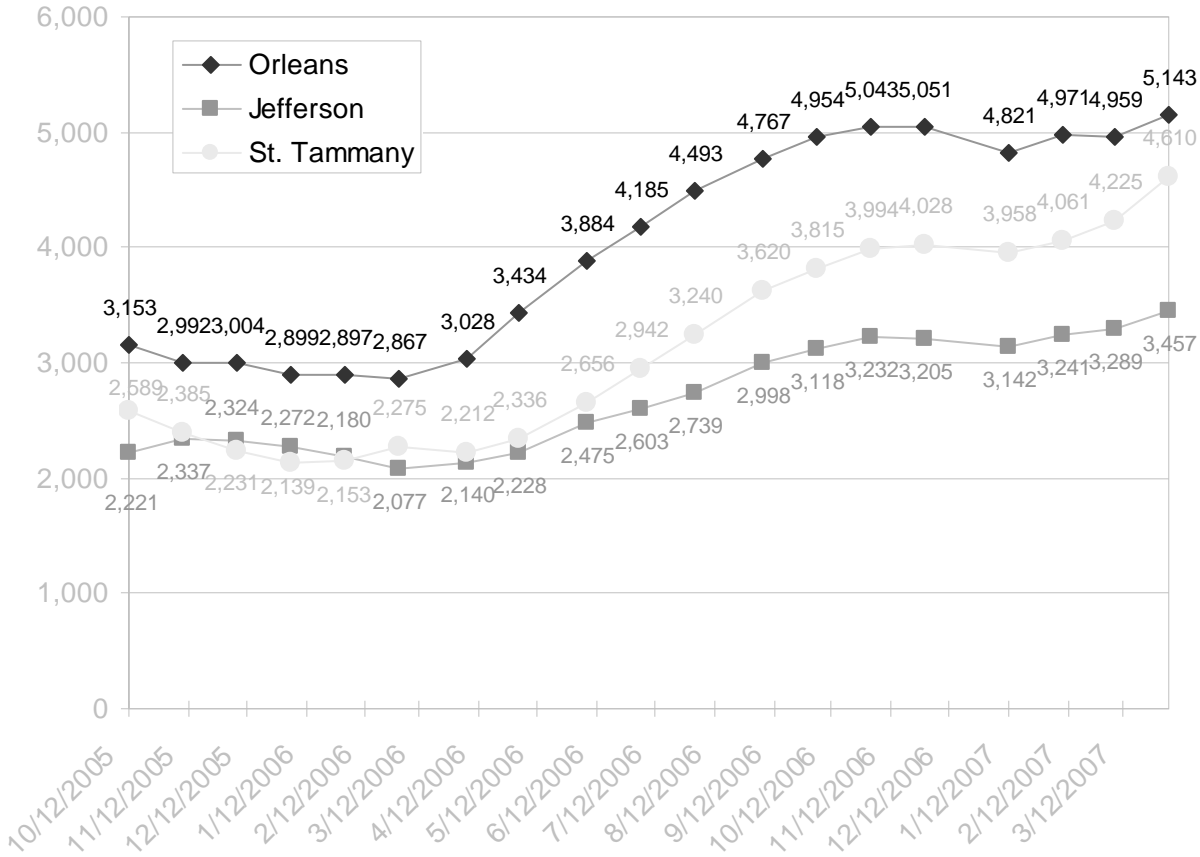
II

# KEY TRACKING FIGURES

II

# KEY TRACKING FIGURES

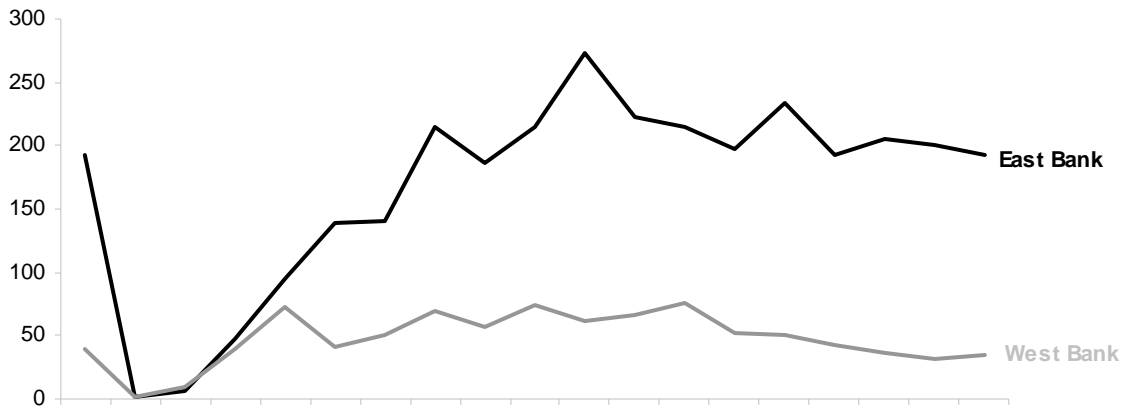
**Figure 1: Residential Properties for Sale in Select Parishes**



Source: National Association of Realtors.

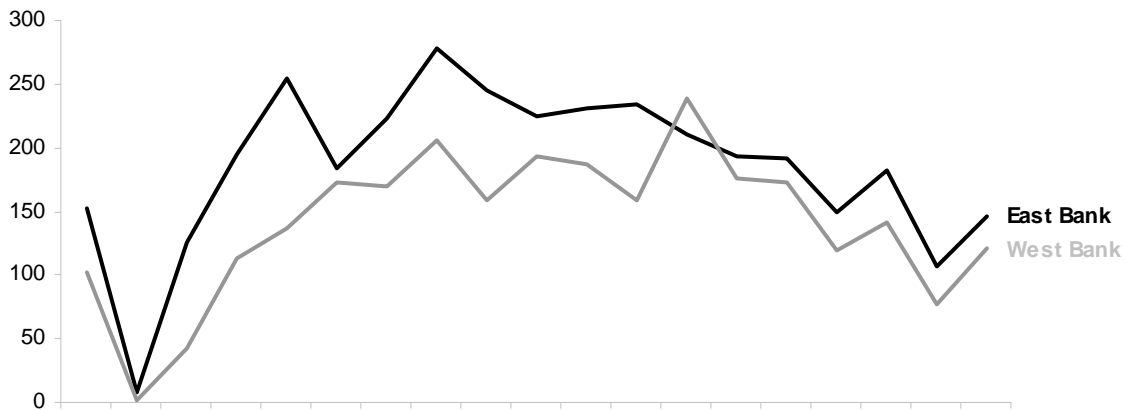
**Figure 2: Single Family Home Sales in Select Parishes**

**Orleans Parish**



	Aug-05	Sep-05	Oct-05	Nov-05	Dec-05	Jan-06	Feb-06	Mar-06	Apr-06	May-06	Jun-06	Jul-06	Aug-06	Sep-06	Oct-06	Nov-06	Dec-06	Jan-07	Feb-07
— East Bank	193	1	7	48	95	139	140	214	187	214	273	222	215	198	234	192	206	200	192
— West Bank	39	1	10	39	72	41	50	70	57	74	62	66	76	52	51	43	37	32	34

**Jefferson Parish**

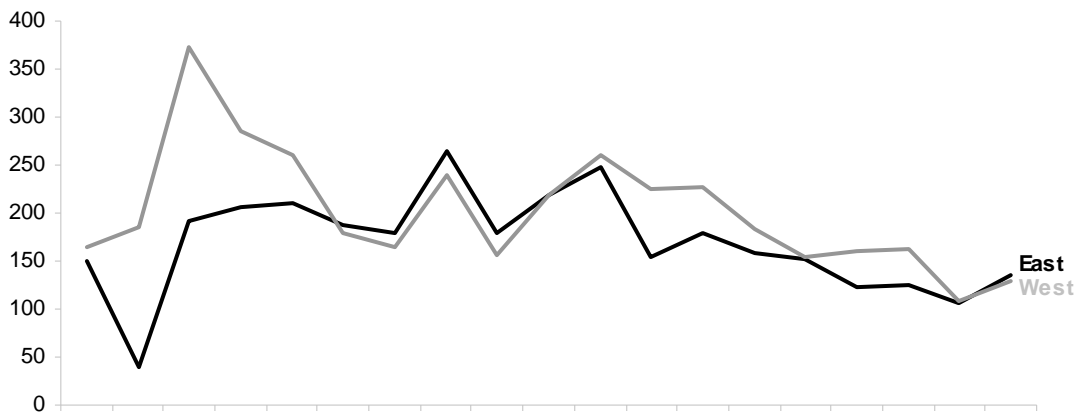


	Aug-05	Sep-05	Oct-05	Nov-05	Dec-05	Jan-06	Feb-06	Mar-06	Apr-06	May-06	Jun-06	Jul-06	Aug-06	Sep-06	Oct-06	Nov-06	Dec-06	Jan-07	Feb-07
— East Bank	153	8	126	195	255	184	223	278	245	225	231	234	211	193	191	150	182	107	146
— West Bank	102	1	42	113	136	173	170	205	159	193	187	159	238	176	172	120	141	77	121

*Continued on next page...*

**Figure 2: Single Family Home Sales in Select Parishes, continued**

**St. Tammany Parish**

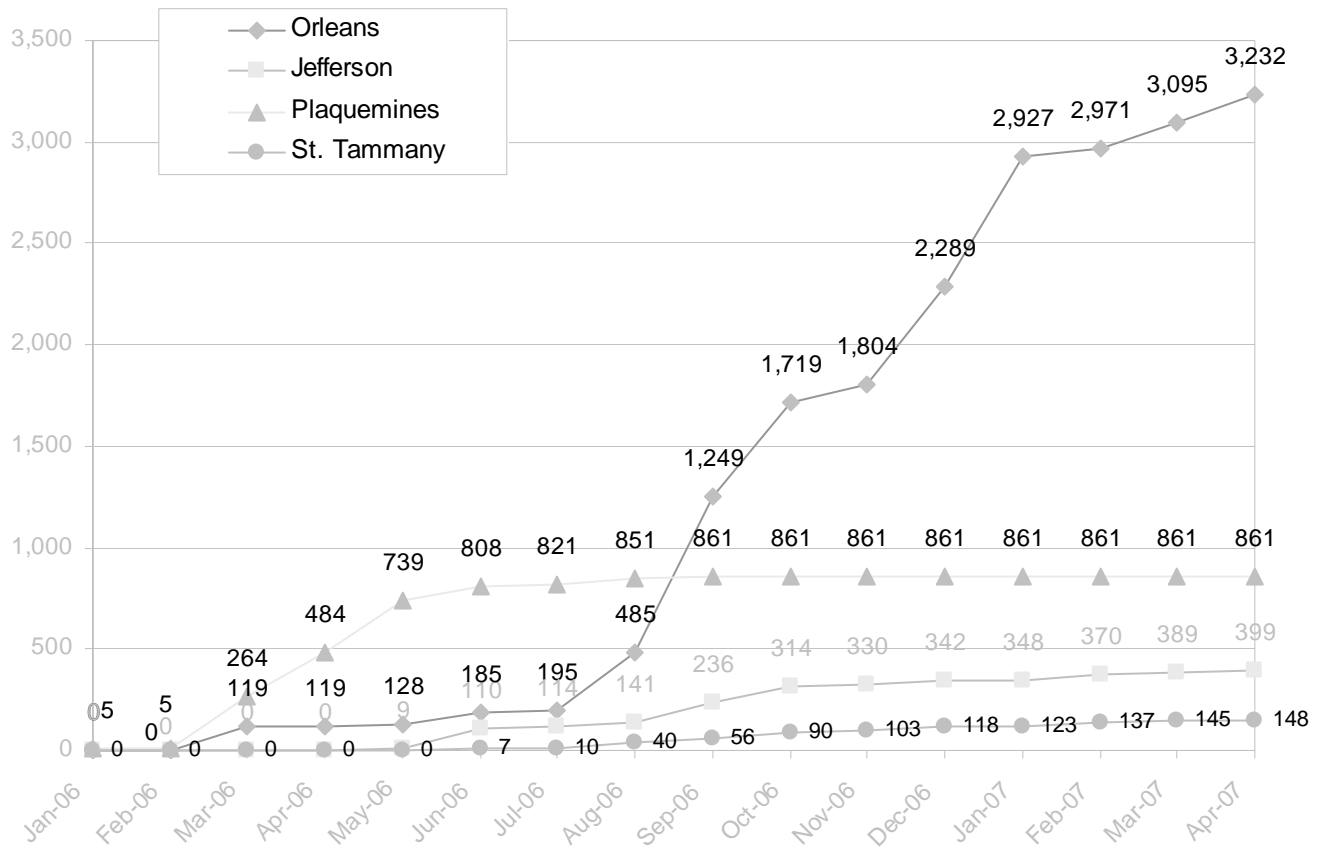


	Aug-05	Sep-05	Oct-05	Nov-05	Dec-05	Jan-06	Feb-06	Mar-06	Apr-06	May-06	Jun-06	Jul-06	Aug-06	Sep-06	Oct-06	Nov-06	Dec-06	Jan-07	Feb-07
— East	149	40	191	207	211	187	180	264	180	219	247	154	179	158	152	122	124	106	135
— West	164	186	373	286	260	180	165	240	157	219	260	225	228	183	155	160	163	108	129

Source: New Orleans Metropolitan Association of Realtors (NOMAR).

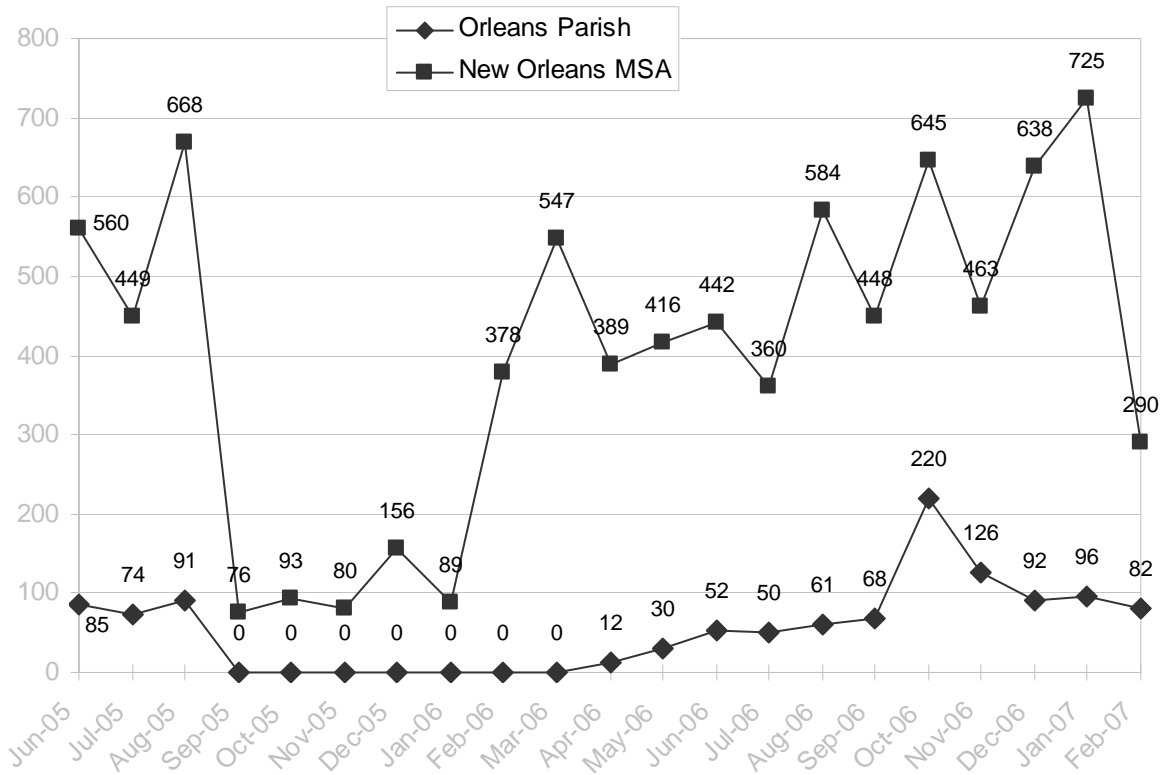
Notes: In 2003, the U.S. Office of Management and Budget redefined the New Orleans metropolitan area to exclude St. James parish. Variance across months is due to changes in both the demand and supply in these local housing markets.

**Figure 3: Cumulative Number of Army Corps Building Demolitions, by Parish**



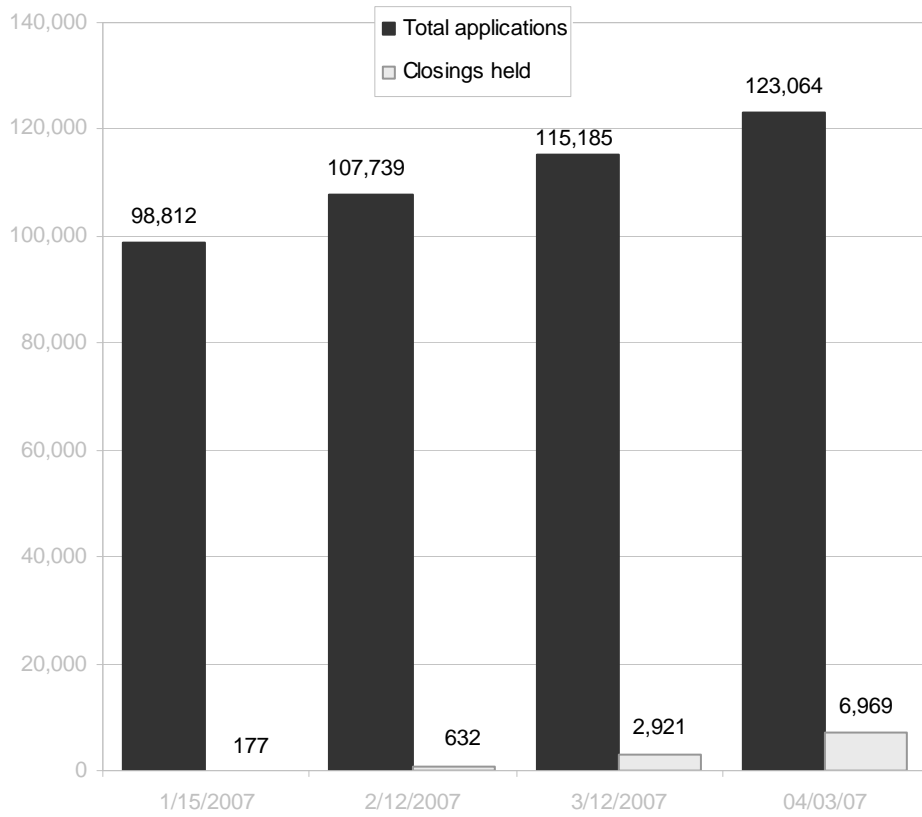
Source: U.S. Army Corps of Engineers.  
 Note: Numbers are cumulative.

**Figure 4: Number of New Residential Housing Units Authorized, Total Units**



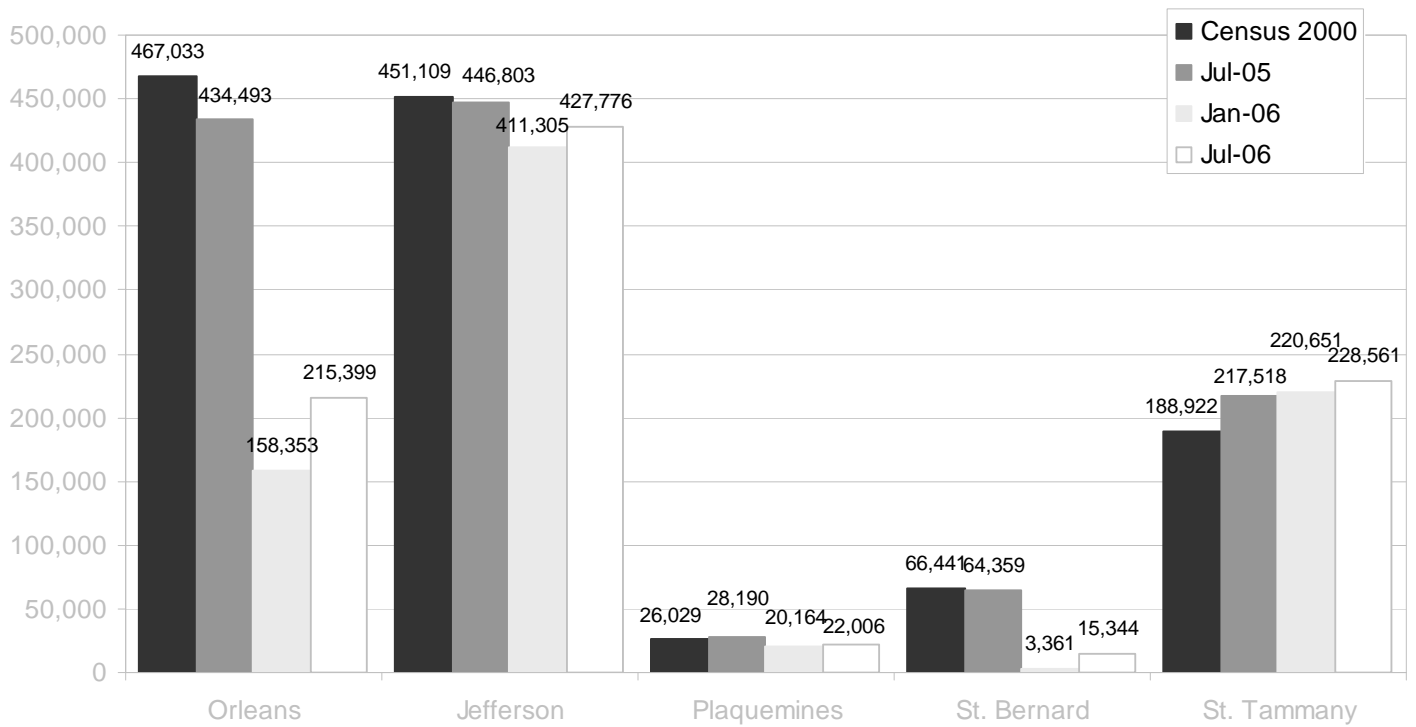
Source: U.S. Census Bureau.

**Figure 5: Status of Louisiana Road Home Applications**



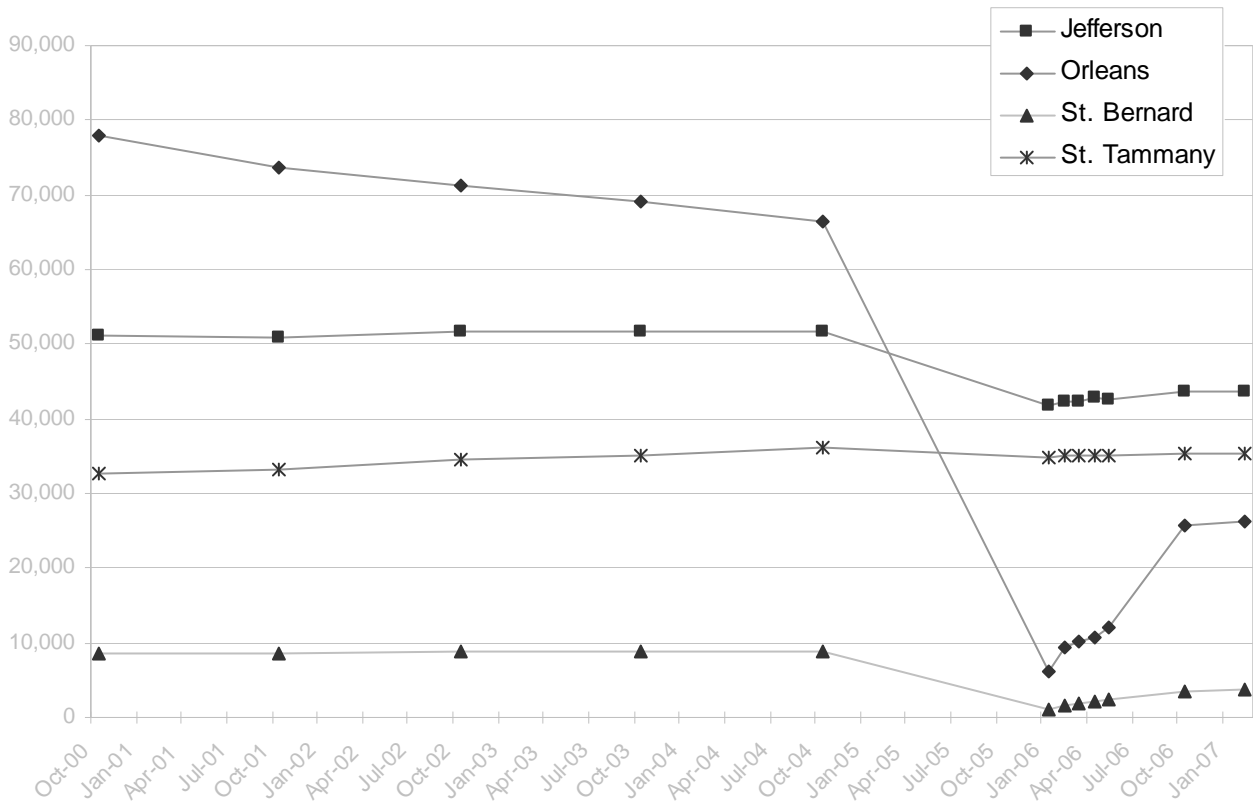
Source: The Road Home Program.

**Figure 6: Non-group Quarters Population by Parish**



Source: US Census Bureau. January 2006 numbers are from the Census' special population estimates for counties affected by Katrina.

Figure 7: Public School Enrollment

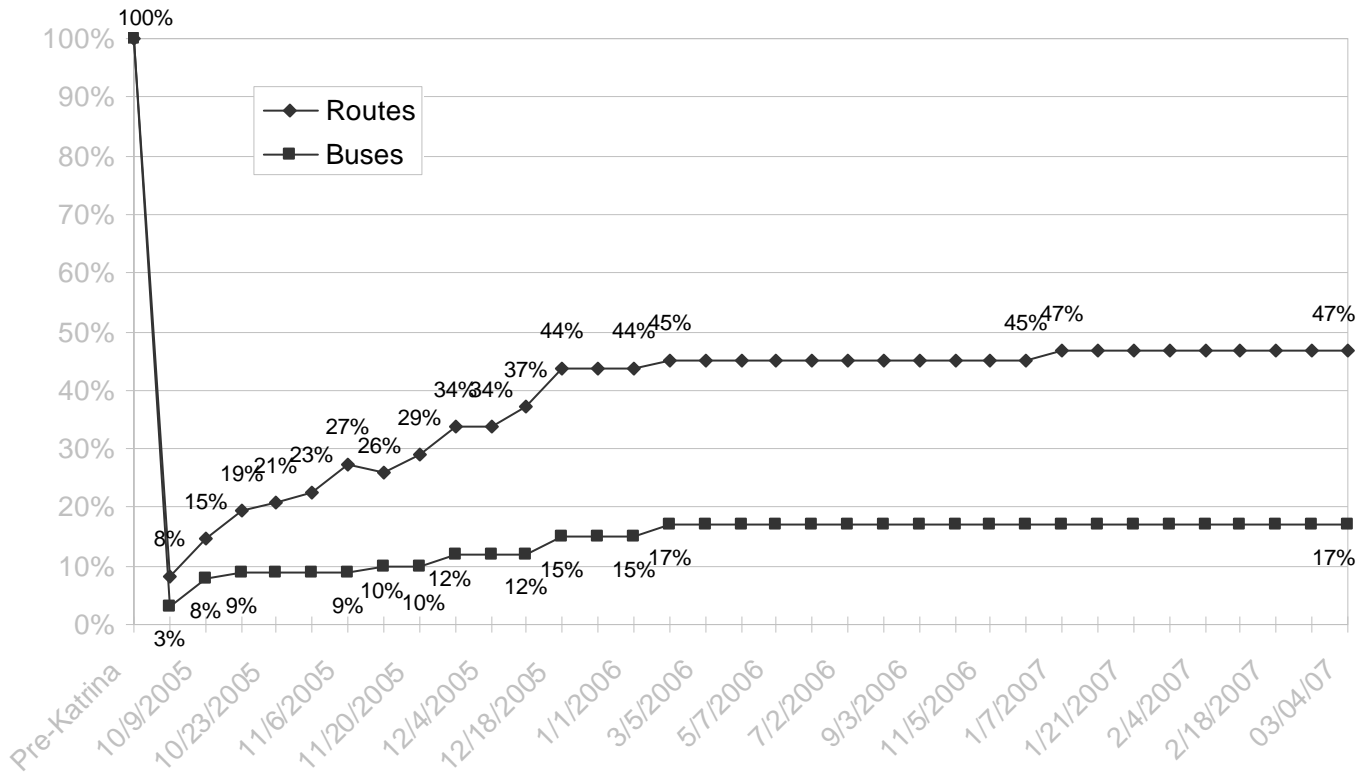


	Oct-00	Oct-01	Oct-02	Oct-03	Oct-04	Jan-06	Feb-06	Mar-06	Apr-06	May-06	Oct-06	Feb-07
Jefferson	51,110	50,915	51,669	51,675	51,666	41,750	42,240	42,339	42,777	42,685	43,617	43,683
Orleans	78,041	73,724	71,212	69,051	66,372	6,242	9,298	10,222	10,816	12,103	25,651	26,165
St. Bernard	8,588	8,635	8,775	8,950	8,872	955	1,670	1,940	2,268	2,337	3,536	3,764
St. Tammany	32,682	33,138	34,466	35,214	36,169	34,845	34,971	34,971	35,021	35,061	35,294	35,439

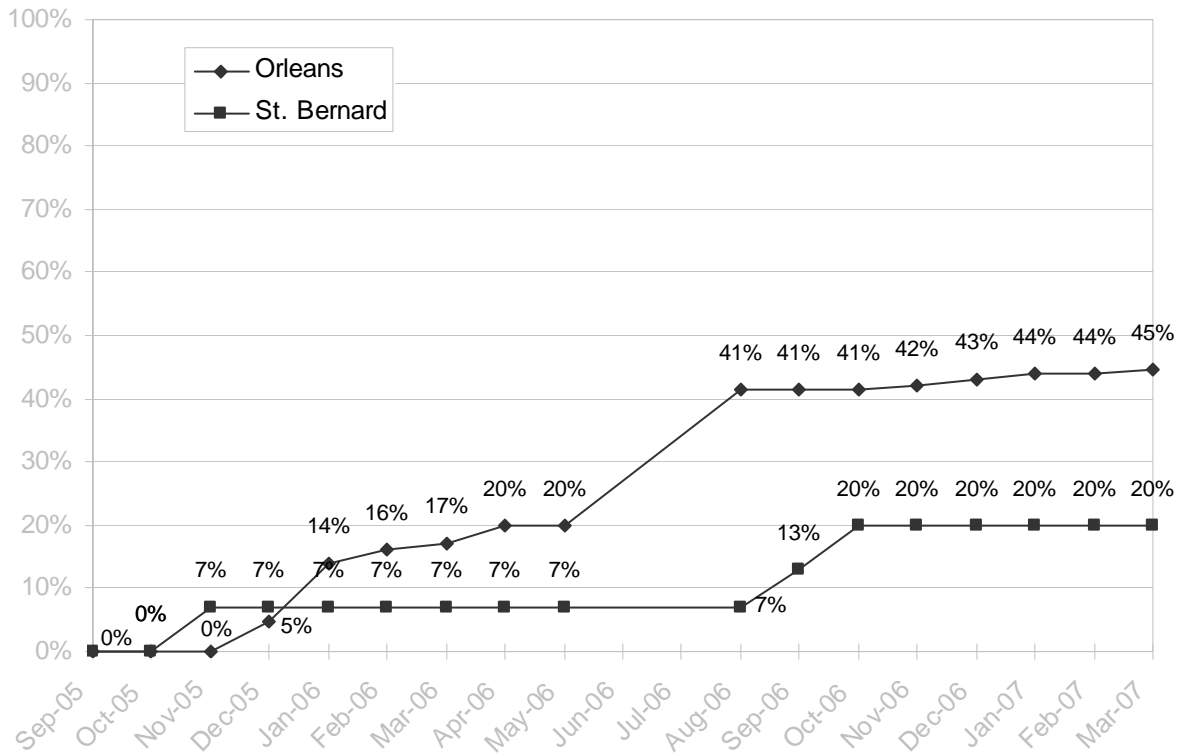
Source: Louisiana Department of Education.

Notes: For Orleans Parish, International School of Louisiana District is included in all years; Milestone Academy of Learning Experiences District is included in 2000-2002; SABIS International School of New Orleans District is included in 2002; Milestone SABIS Academy of New Orleans District is included in 2003 onwards; Recovery School District-UNO is included in 2004; RSD-UNO-New Beginnings Schools Foundation, RSD-Southern University New Orleans, RSD-Knowledge Is Power Program (KIPP) N.O. and RSD-Middle School Advocates, Inc are included in the Jan 2006-May 2006 Numbers; the Recovery School District, the Algiers Charter School Association, and other independently run charter schools located in Orleans Parish are included in October 2006. Orleans Parish also includes the Juvenile Alternative Center. For Plaquemines Parish, 2002-2006 includes Belle Chasse Academy.

**Figure 8: Operational Buses & Open Public Transportation Routes in New Orleans**



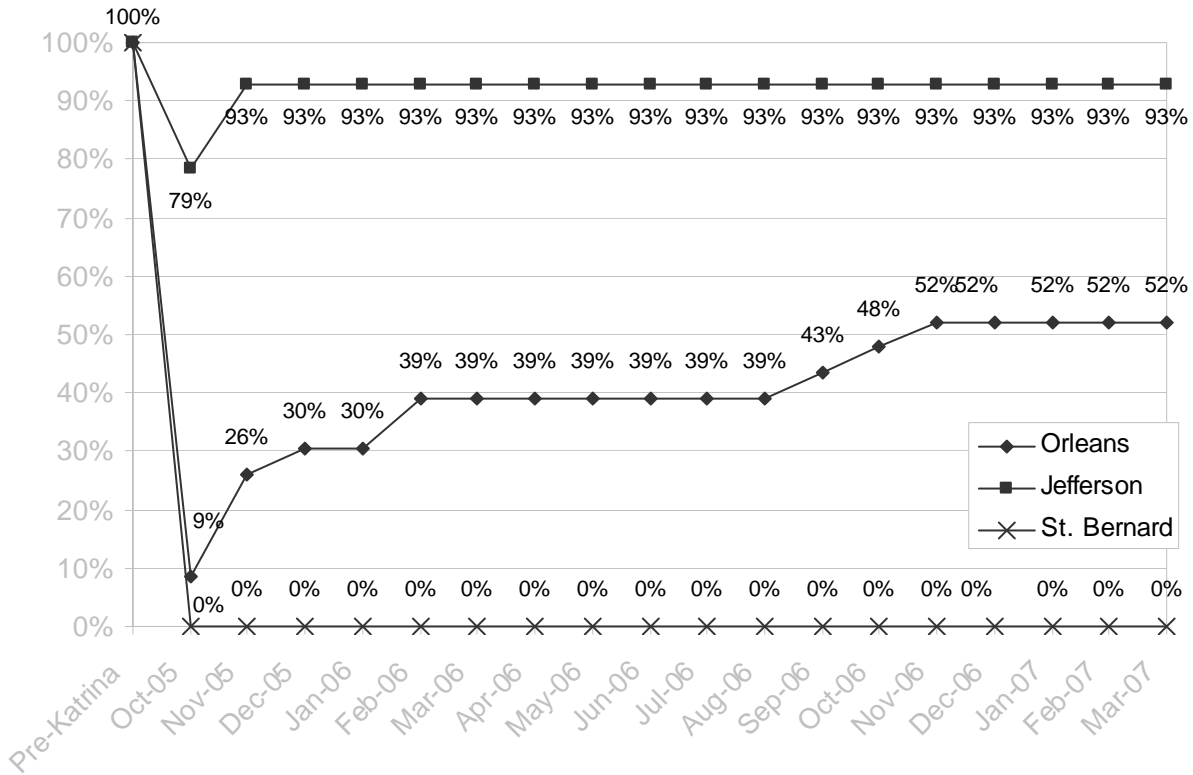
**Figure 9: Proportion of Open Public Schools in Select Louisiana Parishes**



Sources: Louisiana Department of Education, Orleans Parish Schools, Plaquemines Parish Schools, New Orleans Times-Picayune.

Note: The Orleans Parish numbers were revised as of January 2007.

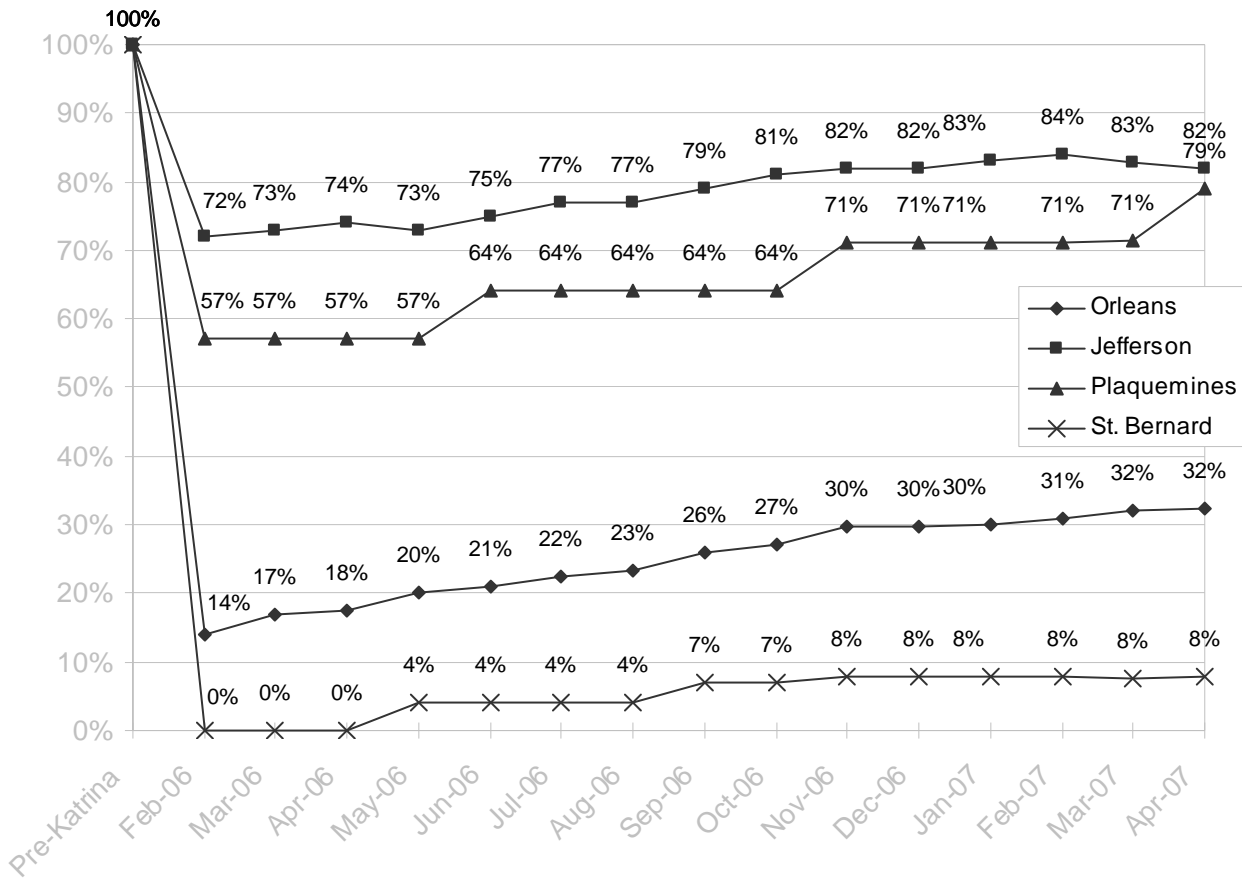
**Figure 10: Proportion of State-licensed Hospitals in Operation, by Parish**



Source: Louisiana Hospital Association, individual hospitals in Orleans, Jefferson, and St. Bernard parishes.

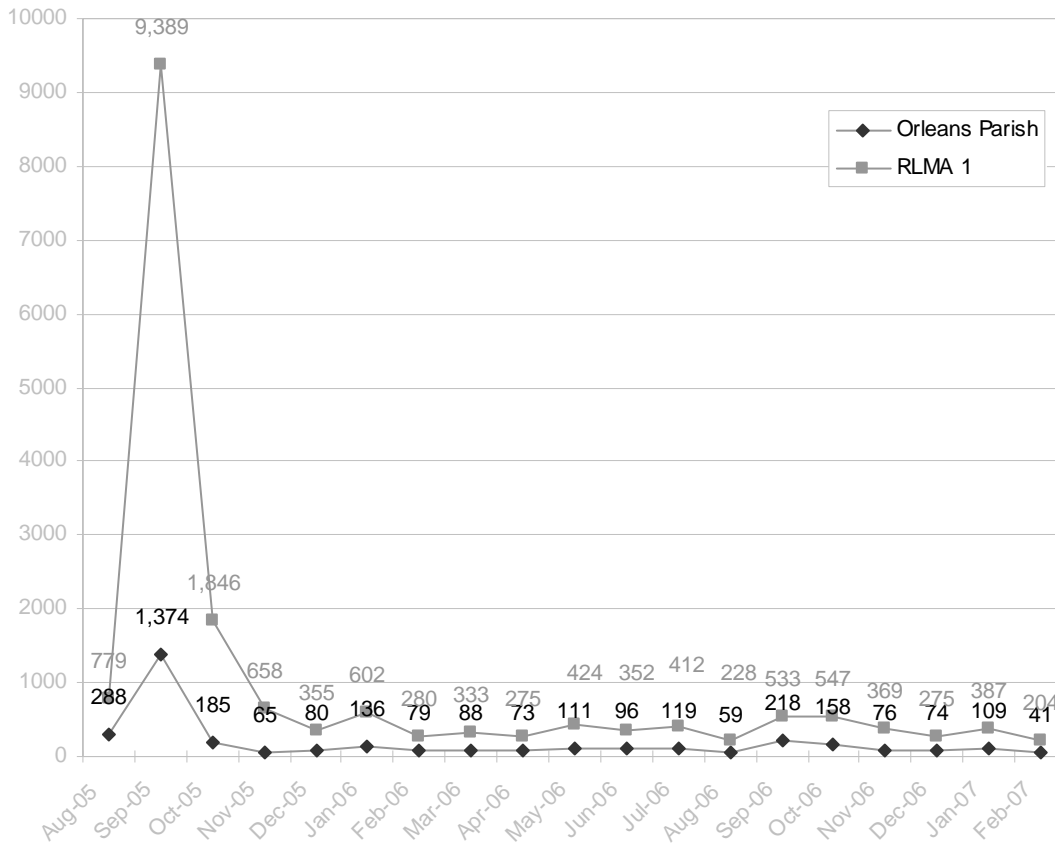
Notes: The state-licensed hospitals number includes not only hospitals providing acute care, but also psychiatric, long-term disability, and rehabilitation facilities. Numbers were revised to monthly counts in January 2007.

**Figure 11: Proportion of Operational Child Care Centers in Select Louisiana Parishes**



Source: Agenda for Children, Louisiana Department of Social Services Bureau of Licensing.

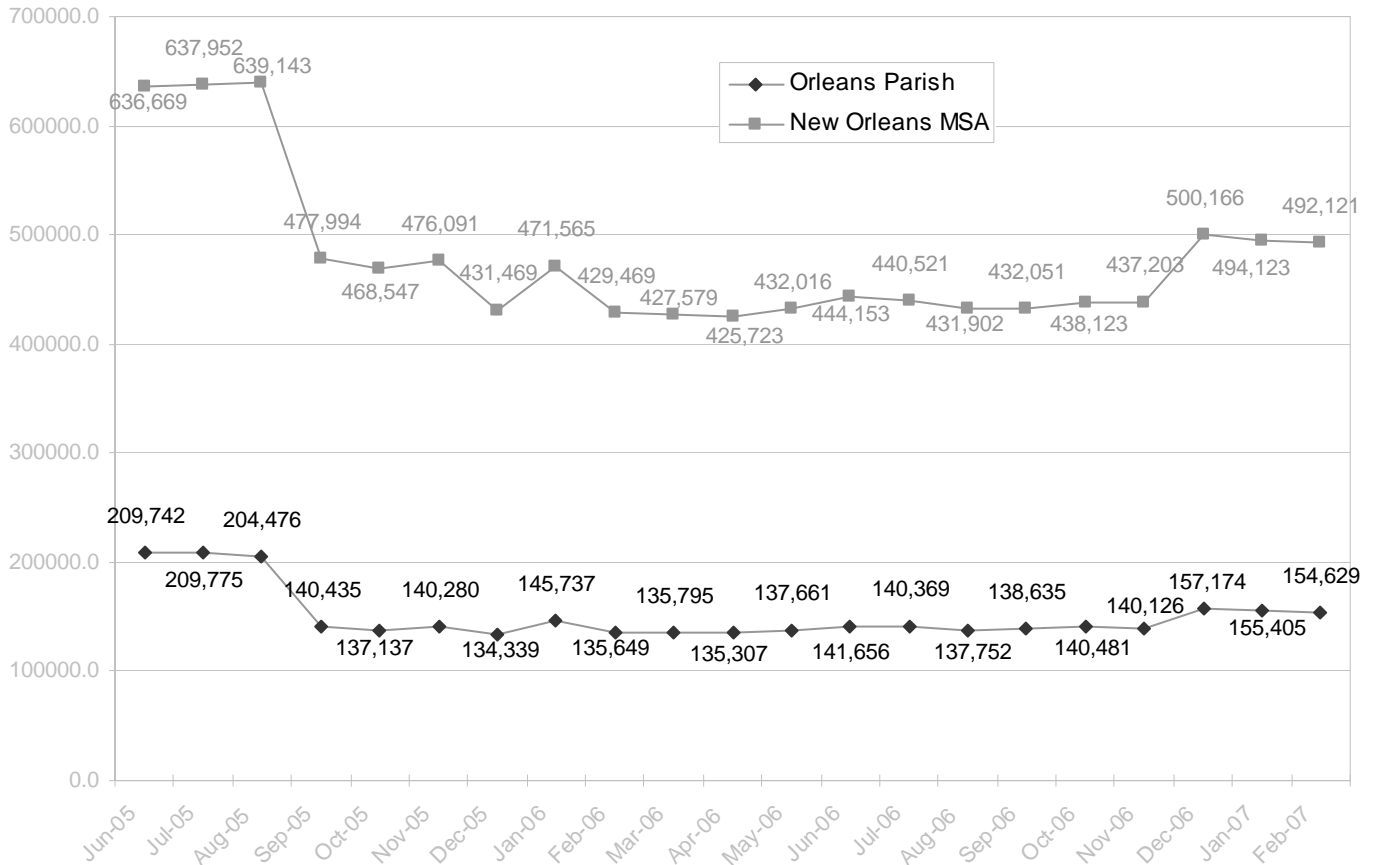
**Figure 12: Unemployment Claims**



Sources: Louisiana Department of Labor; Office of Workforce Security, U.S. Department of Labor.

Notes: Cell entries reflect the number of unemployment claims filed during the previous week. na = not available. Data for Orleans Parish and RLMA 1 are recorded only once each month. RLMA 1 = Regional Labor Market Area 1 (New Orleans Region) and includes Jefferson, Orleans, Plaquemines, St. Bernard, St. Charles, St. James, St. John the Baptist and St. Tammany Parishes.

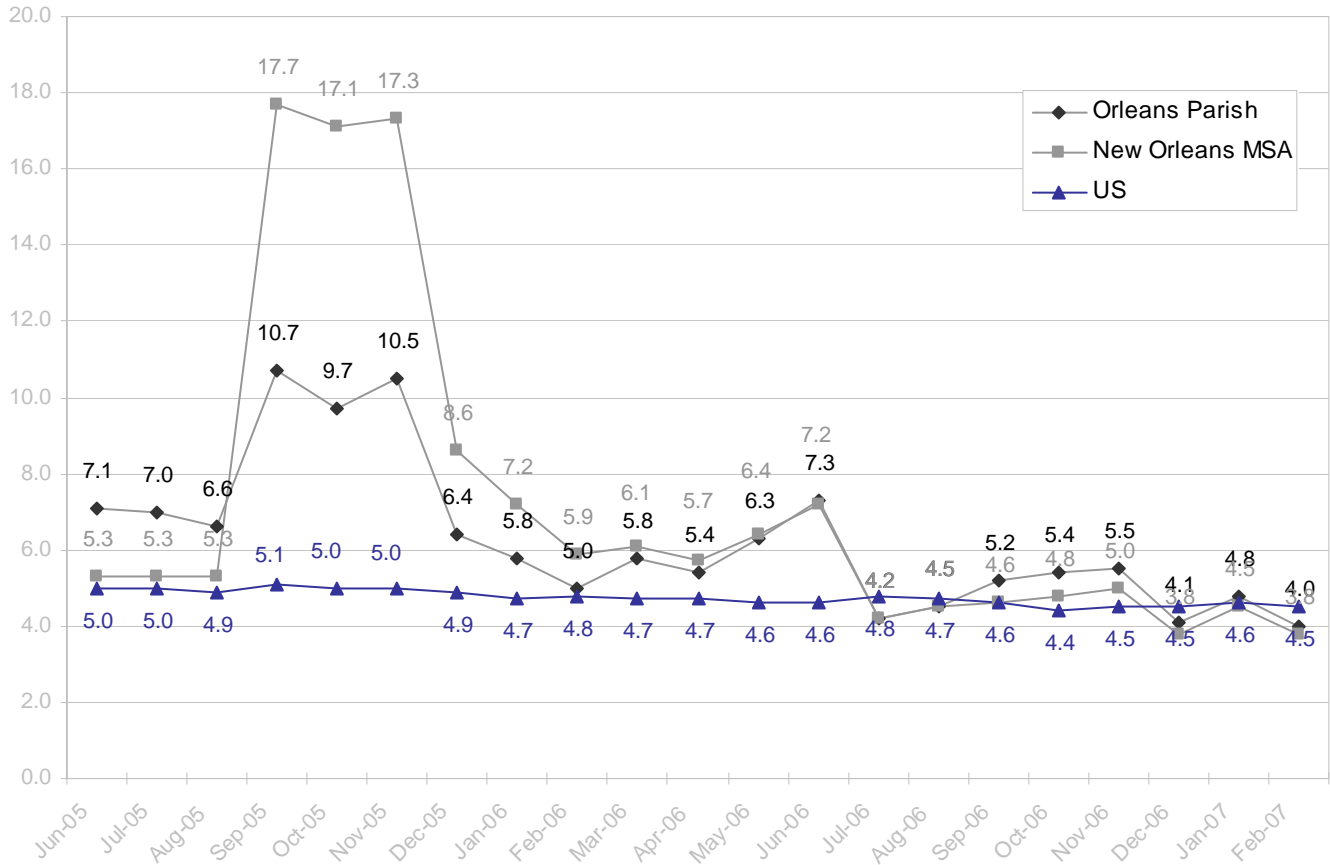
**Figure 13: Labor Force Size: Orleans & Metro area**



Source: Louisiana Department of Labor, Bureau of Labor Statistics.

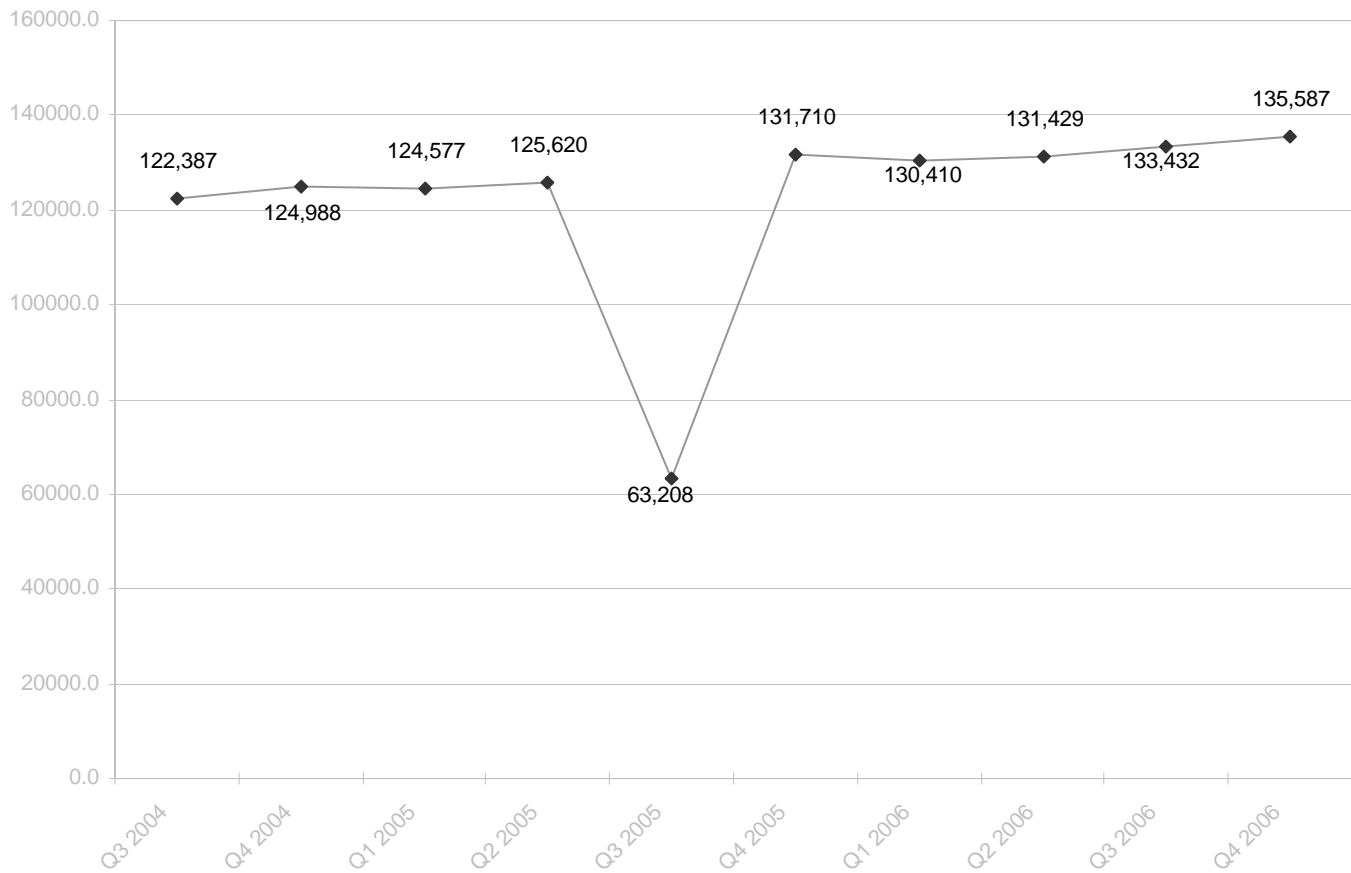
Note: Between September 2005 and July 2006, numbers for Orleans Parish were unavailable because of problems with the sample size. In August 2006, the Louisiana Department of Labor (LDOL) again started releasing current and historical labor force data for New Orleans. However, these estimates are not approved by the Bureau of Labor Statistics and LDOL makes the following caveat in their release: "Caution should be used when making comparisons with 2005 data for areas affected by Hurricane Katrina since controlling data used in the estimation process cannot fully reflect the known shifts in the population" (for more information, please refer to page 13 of [www.laworks.net/forms/lmi/Bulletin\\_August\\_2006.pdf](http://www.laworks.net/forms/lmi/Bulletin_August_2006.pdf)). Numbers are revised & seasonally adjusted, unless otherwise noted. (ns): not seasonally adjusted; (p): preliminary.

**Figure 14: Unemployment Rates in Orleans Parish, New Orleans MSA, & U.S.**



Source: Louisiana Department of Labor, Bureau of Labor Statistics.

Note: Between September 2005 and July 2006, numbers for Orleans Parish were unavailable because of problems with the sample size. In August 2006, the Louisiana Department of Labor (LDOL) again started releasing current and historical labor force data for New Orleans. However, these estimates are not approved by the Bureau of Labor Statistics and LDOL makes the following caveat in their release: "Caution should be used when making comparisons with 2005 data for areas affected by Hurricane Katrina since controlling data used in the estimation process cannot fully reflect the known shifts in the population" (for more information, please refer to page 13 of [www.laworks.net/forms/lmi/Bulletin\\_August\\_2006.pdf](http://www.laworks.net/forms/lmi/Bulletin_August_2006.pdf)).

**Figure 15: Total Personal Income: Louisiana**

Source: Bureau of Economic Analysis, State Quarterly Income Estimates.

III

# HOUSING

III

**Table 1: Average Home Sale Price for Single Family Homes in New Orleans Metro Area**

Month	Orleans West				St. Bernard	Plaque- mines	St. Charles, St. James, & St.		East St. Tammany	West St. Tammany
	Orleans East Bank	Bank (Algiers)	East Jefferson	West Jefferson			John the Baptist			
Sep-04	190,152	192,443	221,740	134,208	114,702	234,972	141,942	159,063	228,165	
Aug-05	244,793	205,621	242,028	164,798	115,741	253,643	175,811	168,456	242,372	
Sep-05	1,050,000	189,000	212,606	188,000	0	389,000	183,818	217,202	252,240	
Oct-05	662,857	298,790	267,013	145,389	0	352,545	176,085	172,895	253,047	
Nov-05	369,662	209,088	263,161	151,457	0	267,553	180,561	161,973	251,180	
Dec-05	319,504	205,323	244,918	161,227	11,000	247,679	167,726	182,045	254,270	
Jan-06	340,208	184,928	239,637	149,142	35,000	240,667	194,266	162,580	252,195	
Feb-06	292,735	240,721	256,590	156,271	57,333	286,750	176,899	159,849	306,309	
Mar-06	250,328	215,497	247,250	152,583	29,500	276,450	187,615	166,549	274,211	
Apr-06	235,126	227,623	235,883	165,906	92,643	277,392	193,142	183,465	286,863	
May-06	259,605	240,162	248,722	169,149	60,286	289,964	227,388	179,871	313,857	
Jun-06	247,436	207,815	263,760	172,000	36,880	221,100	219,613	187,596	301,778	
Jul-06	220,272	247,882	255,667	285,013	38,733	287,915	194,908	201,013	305,830	
Aug-06	175,126	206,073	247,973	173,282	44,793	282,500	193,211	179,239	293,850	
Sep-06	249,888	196,863	230,218	165,525	43,874	285,578	200,263	186,605	312,558	
Oct-06	193,381	182,722	245,122	168,574	54,511	255,250	209,745	196,146	273,530	
Nov-06	194,928	204,056	246,300	157,899	48,273	259,000	215,697	188,486	293,772	
Dec-06	171,397	167,830	270,368	179,855	55,306	216,667	192,087	203,621	277,613	
Jan-07	174,179	211,742	235,216	158,071	54,419	228,714	196,404	186,224	296,910	
Feb-07	162,088	200,270	272,720	165,849	65,700	315,117	182,287	193,124	263,791	
Mar-07	Next update: 5/2007									

Source: New Orleans Metropolitan Association of Realtors (NOMAR).

Notes: In 2003, the U.S. Office of Management and Budget redefined the New Orleans metropolitan area to exclude St. James parish. Variance across months is due to changes in both the demand and supply in these local housing markets.

**Table 2: Number of Single Family Home Sales in New Orleans Metro Area**

Month	Orleans West				St. Bernard	Plaque- mines	St. Charles, St. James, & St.		East St. Tammany	West St. Tammany
	Orleans East Bank	Bank (Algiers)	East Jefferson	West Jefferson			John the Baptist			
Sep-04	191	49	154	117	46	9	76	139	182	
Aug-05	193	39	153	102	49	7	69	149	164	
Sep-05	1	1	8	1	0	1	87	40	186	
Oct-05	7	10	126	42	0	11	133	191	373	
Nov-05	48	39	195	113	0	19	128	207	286	
Dec-05	95	72	255	136	1	14	140	211	260	
Jan-06	139	41	184	173	1	6	79	187	180	
Feb-06	140	50	223	170	3	6	70	180	165	
Mar-06	214	70	278	205	3	14	106	264	240	
Apr-06	187	57	245	159	7	12	87	180	157	
May-06	214	74	225	193	7	11	96	219	219	
Jun-06	273	62	231	187	25	15	101	247	260	
Jul-06	222	66	234	159	15	17	91	154	225	
Aug-06	215	76	211	238	28	9	91	179	228	
Sep-06	198	52	193	176	21	18	109	158	183	
Oct-06	234	51	191	172	19	8	80	152	155	
Nov-06	192	43	150	120	22	9	65	122	160	
Dec-06	206	37	182	141	31	3	70	124	163	
Jan-07	200	32	107	77	36	7	69	106	108	
Feb-07	192	34	146	121	25	6	60	135	129	
Mar-07	Next update: 5/2007									

Source: New Orleans Metropolitan Association of Realtors (NOMAR).

Notes: In 2003, the U.S. Office of Management and Budget redefined the New Orleans metropolitan area to exclude St. James parish. Variance across months is due to changes in both the demand and supply in these local housing markets.

**Table 3: Fair Market Rents in New Orleans MSA, by Unit Bedrooms**

	Efficiency	1-Bedroom	2-Bedroom	3-Bedroom	4-Bedroom
FY 2000	\$365	\$418	\$521	\$709	\$858
FY 2001	369	423	527	717	868
FY 2002	446	512	637	867	1,050
FY 2003	461	529	659	896	1,085
FY 2004	463	531	661	899	1,089
FY 2005	522	578	676	868	897
FY 2006	725	803	940	1,206	1,247
FY 2007	755	836	978	1,256	1,298

Source: U.S. Department of Housing and Urban Development, Fair Market Rent History 2000 to 2005 and County Level Data File for 2006-2007.

**Table 4: Number of Residential Properties for Sale in New Orleans MSA, by Parish**

Week	Orleans	Jefferson	Plaquemines	St. Bernard	St. Charles	St. John the Baptist	St. Tammany	New Orleans MSA
10/12/05	3,153	2,221	97	219	375	260	2,589	8,914
11/09/05	2,992	2,337	99	166	351	272	2,385	8,330
12/07/05	3,004	2,324	86	148	341	252	2,231	8,386
01/04/06	2,899	2,272	88	119	296	211	2,139	8,024
02/01/06	2,897	2,180	71	102	299	124	2,153	7,826
03/01/06	2,867	2,077	67	109	293	122	2,275	7,810
04/05/06	3,028	2,140	86	130	300	140	2,212	8,036
05/03/06	3,434	2,228	96	156	294	169	2,336	8,713
06/07/06	3,884	2,475	102	163	286	170	2,656	9,736
07/05/06	4,185	2,603	139	202	290	195	2,942	10,556
08/02/06	4,493	2,739	148	241	311	214	3,240	11,386
09/06/06	4,767	2,998	154	275	282	253	3,620	12,349
10/04/06	4,954	3,118	154	286	290	215	3,815	12,832
11/01/06	5,043	3,232	161	290	326	211	3,994	13,257
11/29/06	5,051	3,205	164	295	330	223	4,028	13,296
01/12/07	4,821	3,142	159	290	341	233	3,958	12,944
02/09/07	4,971	3,241	161	272	432	247	4,061	13,385
03/08/07	4,959	3,289	162	271	438	265	4,225	13,609
04/05/07	5,143	3,457	166	267	449	284	4,610	14,376

Source: National Association of Realtors.

**Table 5: Cumulative Number of Army Corps Building Demolitions, by Parish**

Month	Orleans	Jefferson	Plaquemines	St. Tammany	Total
Jan-06	0	0	5	0	5
Feb-06	0	0	5	0	5
Mar-06	119	0	264	0	383
Apr-06	119	0	484	0	603
May-06	128	9	739	0	876
Jun-06	185	110	808	7	1,110
Jul-06	195	114	821	10	1,140
Aug-06	485	141	851	40	1,517
Sep-06	1,249	236	861	56	2,402
Oct-06	1,719	314	861	90	2,984
Nov-06	1,804	330	861	103	3,098
Dec-06	2,289	342	861	118	3,610
Jan-07	2,927	348	861	123	4,259
Feb-07	2,971	370	861	137	4,339
Mar-07	3,095	389	861	145	4,490
Apr-07	3,232	399	861	148	4,640

Source: U.S. Army Corps of Engineers.

Note: Numbers are cumulative.

**Table 6: Cumulative Number of Residential Building Permits Issued by New Orleans City Hall**

Month	Number of residential building permits
Oct-05	295
Nov-05	1,821
Dec-05	4,642
Jan-06	12,170
Feb-06	18,516
Mar-06	26,489
Apr-06	30,149
May-06	33,150
Jun-06	36,488
Jul-06	39,415
Aug-06	46,306
Sep-06	48,080
Oct-06	49,433
Nov-06	50,739
Dec-06	51,859
Jan-07	52,948
Feb-07	53,994
Mar-07	No new data

Sources: City of New Orleans Department of Safety and Permits.

Note: In December 2006, the City of New Orleans informed us that they would be providing this data in raw format rather than as frequencies. Running frequencies on the raw data supplied by the City resulted in different statistics than previously published. We have updated all of the numbers in this table to reflect this change. Residential permits include accessory structure, addition (over 50%), addition (under 50%), change of use, demolition, emergency permit, homeowner accessory structure, homeowner repair, new, renovation (non-structural), renovation (structural), repair, and swimming pool.

**Table 7: Number of New Residential Housing Units Authorized, by Type of Home**

Month	Orleans			New Orleans MSA			Louisiana		
	Single Home	Multi Family	Total Units	Single Home	Multi Family	Total Units	Single Home	Multi Family	Total Units
Jun-05	57	28	85	501	59	560	1,889	138	2,027
Jul-05	49	25	74	418	31	449	1,614	213	1,827
Aug-05	57	34	91	594	74	668	1,884	122	2,006
Sep-05	0	0	0	73	3	76	1,575	78	1,653
Oct-05	0	0	0	90	3	93	1,502	88	1,590
Nov-05	0	0	0	78	2	80	1,651	181	1,832
Dec-05	0	0	0	154	2	156	1,361	82	1,443
Jan-06	0	0	0	85	4	89	1,449	109	1,558
Feb-06	0	0	0	358	20	378	1,631	120	1,751
Mar-06	0	0	0	523	24	547	2,312	120	2,432
Apr-06	10	2	12	364	25	389	1,648	200	1,848
May-06	24	6	30	367	49	416	1,874	248	2,122
Jun-06	35	17	52	417	25	442	1,843	328	2,171
Jul-06	36	14	50	338	22	360	1,549	188	1,737
Aug-06	59	2	61	475	109	584	2,013	207	2,220
Sep-06	48	20	68	414	34	448	1,571	150	1,721
Oct-06	56	164	220	443	202	645	1,643	337	1,980
Nov-06	60	66	126	387	76	463	1,451	151	1,602
Dec-06	60	32	92	596	42	638	2,627	1,236	3,863
Jan-07	70	26	96	409	316	725	1,230	618	1,848
Feb-07	60	22	82	264	26	290	1,159	87	1,246

Source: U.S. Census Bureau.

**Table 8: Status of Louisiana Road Home Applications**

	Total applications	Appointments scheduled or held	Benefits calculated	Amount of benefits calculated	Average benefit calculation	Closings held
01/15/07	98,812	66,016	29,147	\$2.23 billion	\$78,740	177
02/12/07	107,739	77,487	37,369	\$2.95 billion	\$80,387	632
03/12/07	115,185	86,878	48,399	\$3.87 billion	\$80,898	2,921
04/09/07	123,064	95,041	64,134	\$4.88 billion	\$76,084	6,969

Source: The Road Home Program.

**Table 9: Anticipated Use of Funds for Road Home Applicants, by Parish**

Date		Anticipated Use of Funds by Applicants					Info Not Available
		Total applications	To keep your home	Sell, stay in Louisiana	Sell, move out of Louisiana	Undecided	
01/11/07	Jefferson	12,858	86%	4%	1%	6%	3%
	Orleans	41,770	74%	9%	2%	13%	2%
	Plaquemines	3,084	48%	19%	1%	27%	5%
	St. Bernard	12,453	40%	35%	4%	21%	1%
	St. Tammany	7,421	80%	8%	1%	9%	2%
02/08/07	Jefferson	14,779	87%	4%	1%	6%	3%
	Orleans	44,275	74%	9%	2%	13%	1%
	Plaquemines	3,360	52%	18%	1%	26%	3%
	St. Bernard	13,244	40%	35%	4%	21%	1%
	St. Tammany	8,305	81%	7%	1%	9%	2%
03/08/07	Jefferson	16,489	88%	4%	1%	6%	2%
	Orleans	46,217	74%	9%	2%	14%	1%
	Plaquemines	3,535	54%	18%	1%	25%	2%
	St. Bernard	13,834	40%	35%	4%	21%	1%
	St. Tammany	9,068	81%	7%	1%	9%	2%
04/05/07	Jefferson	18,737	88%	4%	1%	6%	2%
	Orleans	48,037	74%	9%	2%	14%	1%
	Plaquemines	3,654	55%	18%	1%	25%	2%
	St. Bernard	14,238	39%	35%	4%	21%	1%
	St. Tammany	9,861	81%	7%	1%	9%	2%

Source: The Road Home Program.

Note: Parish information is as reported on applications received from homeowners and may differ once validated by The Road Home Program.

IV

# POPULATION

IV

**Table 10: Total Population Estimates**

	Jefferson	Orleans	Plaquemines	St. Bernard	St. Charles	St. John	St. Tammany	MSA
Census 2000	455,466	484,674	26,757	67,229	48,072	43,044	191,268	1,316,510
Jul-05	451,049	452,170	28,903	65,147	50,554	46,150	219,814	1,313,787
Jul-06	431,361	223,388	22,512	15,514	52,761	48,537	230,605	1,024,678

Source: US Census Bureau.

**Table 11: Non-Group Quarters Population Estimates**

	Jefferson	Orleans	Plaquemines	St. Bernard	St. Charles	St. John	St. Tammany	MSA
Census 2000	451,109	467,033	26,029	66,441	47,642	42,601	188,922	1,289,777
Jul-05	446,803	434,493	28,190	64,359	50,124	45,707	217,518	1,287,194
Jan-06	411,305	158,353	20,164	3,361	52,269	48,642	220,651	914,745
Jul-06	427,776	215,399	22,006	15,344	52,331	48,094	228,561	1,009,511

Source: US Census Bureau. January 2006 numbers are from the Census' special population estimates for counties affected by

**Table 12: College Students Enrolled in New Orleans, by University**

Semester	Dillard University	Loyola University	Southern University of New Orleans	Tulane University	University of New Orleans	Xavier University
Fall 2005 (Pre-Katrina)	2,155	5,480	3,600	13,214	17,142	4,100
Spring 2006	1,085 50%	4,993 91%	Not available	11,307 86%	11,446 67%	3,110 76%
Fall 2006	1,000 46%	4,874 89%	2,750 76%	10,552 80%	11,747 69%	3,100 76%
Spring 2007	Next update: 5/2007	4,548 83%	2,344 65%	10,095 76%	10,765 63%	2,880 70%

Sources: Dillard University, Loyola University, Tulane University, University of New Orleans, Xavier University, Washington Post, New York Times, New Orleans Times-Picayune.

Note: Some numbers are approximate.

**Table 13: Public School Enrollment Totals in New Orleans MSA, by Parish**

	Jefferson	Orleans	Plaquemines	St. Bernard	St. Charles	St. John	St. Tammany
Oct-00	51,110	78,041	4,989	8,588	9,984	6,547	32,682
Oct-01	50,915	73,724	4,933	8,635	9,947	6,309	33,138
Oct-02	51,669	71,212	5,475	8,775	9,807	6,384	34,466
Oct-03	51,675	69,051	5,823	8,950	9,757	6,431	35,214
Oct-04	51,666	66,372	5,952	8,872	9,797	6,559	36,169
Fall 2005	Uncertainty of data due to Katrina						
Jan-06	41,750	6,242	3,563	955	9,945	6,923	34,845
Feb-06	42,240	9,298	3,623	1,670	9,885	6,886	34,971
Mar-06	42,339	10,222	3,664	1,940	9,846	6,875	34,971
Apr-06	42,777	10,816	3,721	2,268	9,775	6,825	35,021
May-06	42,685	12,103	3,762	2,337	9,761	6,815	35,061
Oct-06	43,617	25,651	4,374	3,536	9,734	6,783	35,294
Feb-07	43,683	26,165	4,411	3,764	9,653	6,726	35,439

Source: Louisiana Department of Education.

Notes: For Orleans Parish, International School of Louisiana District is included in all years; Milestone Academy of Learning Experiences District is included in 2000-2002; SABIS International School of New Orleans District is included in 2002; Milestone SABIS Academy of New Orleans District is included in 2003 onwards; Recovery School District-UNO is included in 2004; RSD-UNO-New Beginnings Schools Foundation, RSD-Southern University New Orleans, RSD-Knowledge Is Power Program (KIPP) N.O. and RSD-Middle School Advocates, Inc are included in the Jan 2006-May 2006 Numbers; the Recovery School District, the Algiers Charter School Association, and other independently run charter schools located in Orleans Parish are included in October 2006. Orleans Parish also includes the Juvenile Alternative Center. For Plaquemines Parish, 2002-2006 includes Belle Chasse Academy. Orleans data for February 2007 does not include Julius Rosenwald (opened Feb 5) & Donald Cohen (opened March 26).

V

# INFRASTRUCTURE

V

**Table 14: Status of Public Transportation in New Orleans**

Week	Riders	Open routes		Operational buses	
		Number	Percent	Number	Percent
Pre-Katrina	124,000	62	100%	368	100%
10/02/05	Not available	5	8%	11	3%
10/09/05	431	9	15%	30	8%
10/16/05	1,009	12	19%	33	9%
10/23/05	1,446	13	21%	33	9%
10/30/05	1,920	14	23%	33	9%
11/06/05	2,928	17	27%	33	9%
11/13/05	4,234	16	26%	35	10%
11/20/05	5,977	18	29%	35	10%
11/27/05	5,192	21	34%	44	12%
12/04/05	7,397	21	34%	44	12%
12/11/05	7,940	23	37%	44	12%
12/18/05	8,705	27	44%	54	15%
12/25/05	8,494	27	44%	57	15%
01/01/06	9,411	27	44%	57	15%
02/05/06	14,847	28	45%	61	17%
03/05/06	15,961	28	45%	61	17%
04/02/06	19,346	28	45%	61	17%
05/07/06	20,879	28	45%	61	17%
06/04/06	20,574	28	45%	61	17%
07/02/06	22,712	28	45%	61	17%
08/06/06	22,817	28	45%	61	17%
09/03/06	15,609	28	45%	61	17%
10/08/06	19,184	28	45%	61	17%
11/05/06	Unavailable	28	45%	61	17%
12/03/06	Unavailable	28	45%	61	17%
01/07/07	16,046	29	47%	61	17%
01/14/07	18,214	29	47%	61	17%
01/21/07	15,482	29	47%	61	17%
01/28/07	16,817	29	47%	61	17%
02/04/07	17,021	29	47%	61	17%
02/11/07	18,553	29	47%	61	17%
02/18/07	17,911	29	47%	61	17%
02/25/07	16,286	29	47%	61	17%
03/04/07	18,453	29	47%	61	17%

Source: New Orleans Regional Transit Authority.

Note: Ridership numbers reflect daily averages of the previous week.

**Table 15: Open Public Schools in New Orleans Metro, by Parish**

Date	Orleans		Jefferson		Plaquemines		St. Bernard		St. Tammany	
	Number	Rate	Number	Rate	Number	Rate	Number	Rate	Number	Rate
Pre-Katrina	128	128	84	84	9	9	15	15	52	52
Fall 2005										
September	0	0%	79	94%	0	0%	0	0%	48	92%
October	0	0%	80	95%	3	33%	0	0%	52	100%
November	1	(1/128)	84	100%	3	33%	1	7%	52	100%
December	6	5%	84	100%	3	33%	1	7%	52	100%
Spring 2006										
January	18	14%	84	100%	3	33%	1	7%	52	100%
February	20	16%	84	100%	3	33%	1	7%	52	100%
March	22	17%	84	100%	3	33%	1	7%	52	100%
April	25	20%	84	100%	3	33%	1	7%	52	100%
May	25	20%	84	100%	3	33%	1	7%	52	100%
Fall 2006										
August	53	41%	84	100%	3	33%	1	7%	52	100%
September	53	41%	84	100%	7	78%	2	13%	52	100%
October	53	41%	84	100%	7	78%	3	20%	52	100%
November	54	42%	84	100%	7	78%	3	20%	52	100%
December	55	43%	84	100%	7	78%	3	20%	52	100%
Spring 2007										
January	55	44%	84	100%	7	78%	3	20%	52	100%
February	56	44%	84	100%	7	78%	3	20%	52	100%
March	57	45%	84	100%	7	78%	3	20%	52	100%

Sources: Louisiana Department of Education, Orleans Parish Schools, Jefferson Parish Schools, Plaquemines Parish Schools, St. Charles Parish Schools, St. Tammany Parish Schools, New Orleans Times-Picayune.

Notes: 100% of the schools in St. Charles, St. James and St. John the Baptist remained open after Hurricane Katrina. The Orleans Parish numbers were revised as of January 2007.

**Table 16: Open Public Libraries in New Orleans Metro, by Parish**

Month	Orleans		Jefferson		Plaquemines		St. Bernard		St. Tammany	
	Number	Rate	Number	Rate	Number	Rate	Number	Rate	Number	Rate
Pre-Katrina	13	100%	16	100%	3	100%	2	100%	12	100%
Nov-05	3	23%	8	50%	1	33%	0	0%	10	83%
Dec-05	4	31%	8	50%	1	33%	0	0%	10	83%
Jan-06	5	38%	8	50%	1	33%	0	0%	10	83%
Feb-06	5	38%	9	56%	1	33%	0	0%	10	83%
Mar-06	5	38%	9	56%	1	33%	0	0%	10	83%
Apr-06	5	38%	9	56%	1	33%	0	0%	10	83%
May-06	5	38%	10	63%	1	33%	0	0%	11	92%
Jun-06	8	62%	10	63%	1	33%	0	0%	11	92%
Jul-06	8	62%	10	63%	1	33%	0	0%	11	92%
Aug-06	8	62%	10	63%	1	33%	0	0%	11	92%
Sep-06	8	62%	10	63%	1	33%	0	0%	11	92%
Oct-06	8	62%	10	63%	1	33%	0	0%	11	92%
Nov-06	8	62%	11	69%	1	33%	0	0%	11	92%
Dec-06	8	62%	11	69%	1	33%	0	0%	11	92%
Jan-07	8	62%	11	69%	1	33%	0	0%	11	92%
Feb-07	8	62%	11	69%	1	33%	0	0%	11	92%
Mar-07	8	62%	11	69%	1	33%	0	0%	11	92%

Notes: 100% of the libraries in St. Charles, St. James and St. John the Baptist remained open after Hurricane Katrina. Orleans & Jefferson numbers were revised in January 2007.

**Table 17: Open State-licensed Hospitals, by Parish**

Month	Orleans		Jefferson		St. Bernard		Total	
	Number	Rate	Number	Rate	Number	Rate	Number	Rate
Pre-Katrina	23	100%	14	100%	2	100%	39	100%
Oct-05	2	9%	11	79%	0	0%	13	33%
Nov-05	6	26%	13	93%	0	0%	19	49%
Dec-05	7	30%	13	93%	0	0%	20	51%
Jan-06	7	30%	13	93%	0	0%	20	51%
Feb-06	9	39%	13	93%	0	0%	22	56%
Mar-06	9	39%	13	93%	0	0%	22	56%
Apr-06	9	39%	13	93%	0	0%	22	56%
May-06	9	39%	13	93%	0	0%	22	56%
Jun-06	9	39%	13	93%	0	0%	22	56%
Jul-06	9	39%	13	93%	0	0%	22	56%
Aug-06	9	39%	13	93%	0	0%	22	56%
Sep-06	10	43%	13	93%	0	0%	23	59%
Oct-06	11	48%	13	93%	0	0%	24	62%
Nov-06	12	52%	13	93%	0	0%	25	64%
Dec-06	12	52%	13	93%	0	0%	25	64%
Jan-07	12	52%	13	93%	0	0%	25	64%
Feb-07	12	52%	13	93%	0	0%	25	64%
Mar-07	12	52%	13	93%	0	0%	25	64%

Source: Louisiana Hospital Association, individual hospitals in Orleans, Jefferson, and St. Bernard.

Notes: The state-licensed hospitals number includes not only hospitals providing acute care, but also psychiatric, long-term disability, and rehabilitation facilities. Numbers were revised to monthly counts for in January 2007.

**Table 18: Open Child Care Centers in Louisiana & Select Parishes**

Month	Orleans		Jefferson		Plaquemines		St. Bernard		St. Charles		St. Tammany		Louisiana	
	Number	Rate	Number	Rate	Number	Rate	Number	Rate	Number	Rate	Number	Rate	Number	Rate
Pre-Katrina	275		197		14		26		27		76		1,996	
Feb-06	38	14%	141	72%	8	57%	0	0%	24	89%	70	92%	1,654	83%
Mar-06	46	17%	144	73%	8	57%	0	0%	24	89%	72	95%	1,677	84%
Apr-06	48	17%	145	74%	8	57%	0	0%	24	89%	72	95%	1,680	84%
May-06	55	20%	143	73%	8	57%	1	4%	24	89%	72	95%	1,685	84%
Jun-06	57	21%	147	75%	9	64%	1	4%	24	89%	72	95%	1,696	85%
Jul-06	61	22%	151	77%	9	64%	1	4%	24	89%	72	95%	1,704	85%
Aug-06	64	23%	152	77%	9	64%	1	4%	23	85%	73	96%	1,708	86%
Sep-06	71	26%	156	79%	9	64%	2	8%	23	85%	74	97%	1,727	87%
Oct-06	74	27%	159	81%	9	64%	2	8%	23	85%	74	97%	1,737	87%
Nov-06	81	29%	161	82%	10	71%	2	8%	23	85%	75	99%	1,753	88%
Dec-06	81	29%	161	82%	10	71%	2	8%	23	85%	75	99%	1,753	88%
Jan-07	82	30%	164	83%	10	71%	2	8%	25	93%	74	97%	1,751	88%
Feb-07	84	31%	165	84%	10	71%	2	8%	25	93%	75	99%	1,757	88%
Mar-07	88	32%	163	83%	10	71%	2	8%	25	93%	77	101%	1,762	88%
Apr-07	89	32%	162	82%	11	79%	2		25	93%	78	103%	1765	88%

Source: Agenda for Children, Louisiana Department of Social Services Bureau of Licensing.

VI

# ECONOMY

VI

**Table 19: Number of Unemployment Claims**

Week	Orleans Parish	RLMA 1	Louisiana	United States
08/13/05	288	779	2,936	257,151
09/03/05	na	na	8,469	271,613
09/10/05	na	na	58,134	322,325
09/17/05	1,374	9,389	73,702	346,039
09/24/05	na	na	39,530	292,262
10/01/05	na	na	48,110	313,847
10/08/05	na	na	52,087	380,093
10/15/05	185	1,846	27,801	303,158
10/22/05	na	na	17,486	304,733
10/29/05	na	na	16,009	294,376
11/05/05	na		27,335	340,491
11/12/05	65	658	9,711	283,564
11/19/05	na	na	11,789	368,859
11/26/05	na	na	7,218	290,730
12/03/05	na	na	6,459	444,600
12/10/05	na	na	3,272	391,961
12/17/05	80	355	2,874	359,108
12/24/05	na	na	2,982	433,397
12/31/05	na	na	2,487	475,889
01/07/06	na	na	3,905	555,114
01/14/06	136	602	4,409	439,873
01/21/06	na	na	2,813	317,926
01/28/06	na	na	3,232	318,805
02/04/06	na	na	2,541	321,527
02/11/06	na	na	2,157	310,078
02/18/06	79	280	1,898	269,571
02/25/06	na	na	2,428	272,478
03/04/06	na	na	2,136	301,867
03/11/06	na	na	2,109	294,764
03/18/06	88	333	2,104	269,237
03/25/06	na	na	2,171	265,370
04/01/06	na	na	2,046	253,985
04/08/06	na	na	2,422	314,696
04/15/06	73	275	1,747	268,472
04/22/06	na	na	2,551	291,349
04/29/06	na	na	2,550	279,715
05/06/06	na	na	2,322	284,635
05/13/06	111	424	2,627	288,972
05/20/06	na	na	2,453	277,168
05/27/06	na	na	2,822	292,714
06/03/06	na	na	3,878	260,263
06/10/06	na	na	3,624	285,892
06/17/06	96	352	2,672	277,173
06/24/06	na	na	3,036	287,548
07/01/06	na	na	3,176	304,638
07/08/06	na	na	2,621	418,363
07/15/06	119	412	3,921	377,115
07/22/06	na	na	3,960	288,890
07/29/06	na	na	2,450	259,673
08/05/06	na	na	2,104	275,430
08/12/06	59	228	2,187	256,259
08/19/06	na	na	2,094	252,357
08/26/06	na	na	2,128	251,275

*Continued on next page...*

**Table 19: Number of Unemployment Claims, continued**

Week	Orleans Parish	RLMA 1	Louisiana	United States
09/02/06	na	na	5,163	259,539
09/09/06	na	na	2,918	240,231
09/16/06	218	533	2,638	267,036
09/23/06	na	na	2,391	261,396
09/30/06	na	na	1,997	249,288
10/07/06	na	na	2,530	307,668
10/14/06	158	547	2,154	271,863
10/21/06	na	na	2,246	291,372
10/28/06	na	na	2,283	301,079
11/04/06	na	na	2,709	326,711
11/11/06	na	na	1,931	286,728
11/18/06	76	369	2,971	367,690
11/25/06	na	na	2,048	323,509
12/02/06	na	na	2,752	448,898
12/09/06	na	na	2,728	384,123
12/16/06	74	275	2,473	361,672
12/23/06	na	na	2,641	425,250
12/30/06	na	na	1,930	499,133
01/06/07	na	na	1,978	505,291
01/13/07	109	387	5,089	506,709
01/20/07	na	na	2,449	367,583
01/27/07	na	na	2,589	359,959
02/03/07	na	na	2,329	339,018
02/10/07	na	na	2,205	363,018
02/17/07	41	204	1,959	305,945
02/24/07	na	na	1,786	299,000
03/03/07	na	na	2,441	320,194
03/10/07	na	na	2,279	na
03/17/07	na	na	2,216	na

Sources: Louisiana Department of Labor; Office of Workforce Security, U.S. Department of Labor.

Notes: Cell entries reflect the number of unemployment claims filed during the previous week. na = not available. Data for Orleans Parish and RLMA 1 are recorded only once each month. RLMA 1 = Regional Labor Market Area 1 (New Orleans Region) and includes Jefferson, Orleans, Plaquemines, St. Bernard, St. Charles, St. James, St. John the Baptist and St. Tammany Parishes.

**Table 20: Unemployment Rates & Total Numbers**

Month	Orleans Parish		New Orleans MSA		Louisiana		US	
	Rate	Total	Rate	Total	Rate	Total	Rate	Total
Jun-05	7.1	14,969 (ns)	5.3	33,640	5.0	103,733	5.0	7,507,000
Jul-05	7.0	14,730 (ns)	5.3	33,883	5.0	103,884	5.0	7,464,000
Aug-05	6.6	13,398 (ns)	5.3	34,145	4.9	101,892	4.9	7,360,000
Sep-05	10.7	15,046 (ns)	17.7	84,728 (ns)	10.9	231,948	5.1	7,606,000
Oct-05	9.7	13,252 (ns)	17.1	80,000 (ns)	11.2	235,789	5.0	7,436,000
Nov-05	10.5	14,764 (ns)	17.3	82,427 (ns)	11.4	241,872	5.0	7,548,000
Dec-05	6.4	8,604 (ns)	8.6	37,120 (ns)	6.4	129,019	4.9	7,331,000
Jan-06	5.8	8,494 (ns)	7.8	33,275 (ns)	4.6	91,638	4.7	7,023,000
Feb-06	4.8	7,115 (ns)	5.9	25,170 (ns)	4.3	85,636	4.8	7,158,000
Mar-06	5.8	7,818 (p,ns)	6.1	26,197 (p,ns)	4.0	79,360	4.7	7,009,000
Apr-06	5.4	7,246 (p,ns)	5.7	24,077 (p,ns)	3.8	74,770	4.7	7,098,000
May-06	6.3	8,690 (p,ns)	6.4	27,518 (p,ns)	3.8	75,537	4.6	7,006,000
Jun-06	7.3	10,308 (p,ns)	7.2	32,198 (p,ns)	3.6	70,971	4.6	6,984,000
Jul-06	4.2	5,835 (p,ns)	4.2	18,573 (p,ns)	3.3	64,884	4.8	7,228,000
Aug-06	4.5	6,214 (p,ns)	4.5	19,351 (p,ns)	3.7	74,282	4.7	7,116,000
Sep-06	5.2	7,164 (p,ns)	4.6	19,710 (p,ns)	4.1	82,093	4.6	6,912,000
Oct-06	5.4	7,533 (p,ns)	4.8	21,151 (p,ns)	4.3	86,664	4.4	6,715,000
Nov-06	5.5	7,746 (p,ns)	5.0	22,011 (p,ns)	4.3	86,335	4.5	6,826,000
Dec-06	4.1	6,376 (ns)	4.4	18,973 (p,ns)	4.2	85,092	4.5	6,849,000
Jan-07	4.8	7,428 (p,ns)	4.5	22,185 (p,ns)	3.7	74,466 (p)	4.6	7,017,000
Feb-07	4.0	6,253 (p,ns)	3.8	18,911 (p,ns)	3.9	77,641 (p)	4.5	6,865,000
Mar-07			Next update: 5/2007				4.4	6,724,000

Source: Louisiana Department of Labor, Bureau of Labor Statistics.

Note: Between September 2005 and July 2006, numbers for Orleans Parish were unavailable because of problems with the sample size. In August 2006, the Louisiana Department of Labor (LDOL) again started releasing current and historical labor force data for New Orleans. However, these estimates are not approved by the Bureau of Labor Statistics and LDOL makes the following caveat in their release: "Caution should be used when making comparisons with 2005 data for areas affected by Hurricane Katrina since controlling data used in the estimation process cannot fully reflect the known shifts in the population" (for more information, please refer to page 13 of [http://www.laworks.net/forms/lmi/Bulletin\\_August\\_2006.pdf](http://www.laworks.net/forms/lmi/Bulletin_August_2006.pdf)). Numbers are revised & seasonally adjusted, unless otherwise noted. (ns): not seasonally adjusted; (p): preliminary.

**Table 21: Labor Force Size**

Month	Orleans Parish	New Orleans MSA	Louisiana	US
Jun-05	209,742 (ns)	636,669	2,077,500	149,211,000
Jul-05	209,775 (ns)	637,952	2,080,777	149,548,000
Aug-05	204,476 (ns)	639,143	2,080,831	149,782,000
Sep-05	140,435 (ns)	477,994 (ns)	2,127,294	150,056,000
Oct-05	137,137 (ns)	468,547 (ns)	2,096,577	150,022,000
Nov-05	140,280 (ns)	476,091 (ns)	2,115,277	150,145,000
Dec-05	134,339 (ns)	431,469 (ns)	2,015,568	150,113,000
Jan-06	145,737 (ns)	471,565 (ns)	1,983,881	150,122,000
Feb-06	147,579 (ns)	475,057 (ns)	1,988,400	150,477,000
Mar-06	135,795 (p,ns)	427,579 (p,ns)	1,987,040	150,689,000
Apr-06	135,307 (p,ns)	425,723 (p,ns)	1,977,530	150,862,000
May-06	137,661 (p,ns)	432,016 (p,ns)	1,981,854	151,051,000
Jun-06	141,656 (p,ns)	444,153 (p,ns)	1,982,321	151,370,000
Jul-06	140,369 (p,ns)	440,521 (p,ns)	1,974,379	151,558,000
Aug-06	137,752 (p,ns)	431,902 (p,ns)	1,985,985	151,734,000
Sep-06	138,635 (p,ns)	432,051 (p,ns)	1,996,707	151,818,000
Oct-06	140,481 (p,ns)	438,123 (p,ns)	2,013,274	152,052,000
Nov-06	140,126 (p,ns)	437,203 (p,ns)	2,006,419	152,449,000
Dec-06	157,174 (ns)	432,494 (p,ns)	2,003,647	152,775,000
Jan-07	155,405 (p,ns)	494,123 (p,ns)	1,996,573 (p)	152,974,000
Feb-07	154,629 (p,ns)	492,121 (p,ns)	1,999,030 (p)	152,784,000
Mar-07		Next update: 5/2007		152,979,000

Source: Louisiana Department of Labor, Bureau of Labor Statistics.

Note: Between September 2005 and July 2006, numbers for Orleans Parish were unavailable because of problems with the sample size. In August 2006, the Louisiana Department of Labor (LDOL) again started releasing current and historical labor force data for New Orleans. However, these estimates are not approved by the Bureau of Labor Statistics and LDOL makes the following caveat in their release: "Caution should be used when making comparisons with 2005 data for areas affected by Hurricane Katrina since controlling data used in the estimation process cannot fully reflect the known shifts in the population" (for more information, please refer to page 13 of [www.laworks.net/forms/lmi/Bulletin\\_August\\_2006.pdf](http://www.laworks.net/forms/lmi/Bulletin_August_2006.pdf)). Numbers are revised & seasonally adjusted, unless otherwise noted. (ns): not seasonally adjusted; (p): preliminary.

**Table 22a: Number of Non-farm Employed People in New Orleans MSA, Louisiana, & the U.S., by Industry: Totals**

Month	Total nonfarm	Source of Industry		Type of Industry	
		Private	Government	Goods Producing	Service Providing
Jun-05	MSA 616,300 (ns)	511,400 (ns)	104,900 (ns)	77,600 (ns)	538,700 (ns)
	LA 1,942,900	1,573,600 (ns)	379,700	323,500 (ns)	1,629,800 (ns)
	US 133,610,000	111,818,000	21,792,000	22,179,000	111,431,000
Jul-05	MSA 604,500 (ns)	503,100 (ns)	101,400 (ns)	77,100 (ns)	527,400 (ns)
	LA 1,949,600	1,567,800 (ns)	378,900	321,600 (ns)	1,616,000 (ns)
	US 133,937,000	112,094,000	21,843,000	22,195,000	111,742,000
Aug-05	MSA 603,700 (ns)	501,500 (ns)	102,200 (ns)	77,200 (ns)	526,500 (ns)
	LA 1,951,300	1,570,900 (ns)	381,000	323,000 (ns)	1,618,100 (ns)
	US 134,139,000	112,279,000	21,860,000	22,219,000	111,920,000
Sep-05	MSA 473,200 (ns)	371,300 (ns)	101,900 (ns)	60,500 (ns)	412,700 (ns)
	LA 1,823,300	1,445,700 (ns)	378,100	307,500 (ns)	1,516,300 (ns)
	US 134,244,000	112,400,000	21,844,000	22,239,000	112,005,000
Oct-05	MSA 425,800 (ns)	345,500 (ns)	80,300 (ns)	65,700 (ns)	360,100 (ns)
	LA 1,773,500	1,415,800 (ns)	356,700	311,600 (ns)	1,464,400 (ns)
	US 134,351,000	112,515,000	21,836,000	22,316,000	112,035,000
Nov-05	MSA 438,900 (ns)	358,900 (ns)	80,000 (ns)	68,800 (ns)	370,100 (ns)
	LA 1,791,300	1,441,100 (ns)	356,200	315,100 (ns)	1,486,800 (ns)
	US 134,702,000	112,842,000	21,860,000	22,384,000	112,318,000
Dec-05	MSA 450,900 (ns)	371,300 (ns)	79,600 (ns)	71,200 (ns)	379,700 (ns)
	LA 1,807,400	1,458,700 (ns)	356,700	317,700 (ns)	1,499,900 (ns)
	US 134,904,000	113,031,000	21,873,000	22,410,000	112,494,000
Jan-06	MSA 446,400 (ns)	373,700 (ns)	72,700 (ns)	71,500 (ns)	374,900 (ns)
	LA 1,810,100	1,446,800 (ns)	346,500	320,400 (ns)	1,469,400 (ns)
	US 135,110,000	113,271,000	21,839,000	22,489,000	112,621,000
Feb-06	MSA 456,300 (ns)	383,500 (ns)	72,800 (ns)	72,500 (ns)	383,800 (ns)
	LA 1,824,000	1,463,600 (ns)	346,700	322,800 (ns)	1,490,300 (ns)
	US 135,410,000	113,535,000	21,875,000	22,541,000	112,869,000
Mar-06	MSA 469,000 (ns)	395,500 (ns)	73,500 (ns)	73,900 (ns)	395,100 (ns)
	LA 1,837,300	1,488,700 (ns)	346,800	327,900 (ns)	1,511,900 (ns)
	US 135,659,000	113,753,000	21,906,000	22,573,000	113,086,000
Apr-06	MSA 473,300 (ns)	399,900 (ns)	73,400 (ns)	74,500 (ns)	398,800 (ns)
	LA 1,835,700	1,494,000 (ns)	345,900	329,100 (ns)	1,514,300 (ns)
	US 135,803,000	113,881,000	21,922,000	22,604,000	113,199,000
May-06	MSA 478,500 (ns)	404,900 (ns)	73,600 (ns)	74,700 (ns)	403,800 (ns)
	LA 1,846,400	1,506,800 (ns)	347,400	331,200 (ns)	1,525,400 (ns)
	US 135,906,000	113,968,000	21,938,000	22,593,000	113,313,000
Jun-06	MSA 485,300 (ns)	412,300 (ns)	73,000 (ns)	76,100 (ns)	409,200 (ns)
	LA 1,857,100	1,521,100 (ns)	346,000	336,300 (ns)	1,530,600 (ns)
	US 136,030,000	114,062,000	21,968,000	22,613,000	113,417,000
Jul-06	MSA 481,700 (ns)	409,600 (ns)	72,100 (ns)	75,000 (ns)	406,700 (ns)
	LA 1,858,000	1,508,100 (ns)	346,700	331,900 (ns)	1,513,600 (ns)
	US 136,252,000	114,262,000	21,990,000	22,622,000	113,630,000
Aug-06	MSA 486,000 (ns)	413,600 (ns)	72,400 (ns)	75,900 (ns)	410,100 (ns)
	LA 1,869,700	1,521,300 (ns)	349,100	336,900 (ns)	1,522,900 (ns)
	US 136,438,000	114,415,000	22,023,000	22,629,000	113,809,000
Sep-06	MSA 490,700 (ns)	415,400 (ns)	75,300 (ns)	76,000 (ns)	414,700 (ns)
	LA 1,880,500	1,529,600 (ns)	350,900	339,600 (ns)	1,541,000 (ns)
	US 136,636,000	114,560,000	22,076,000	22,625,000	114,011,000
Oct-06	MSA 492,800 (ns)	417,900 (ns)	74,900 (ns)	76,600 (ns)	416,200 (ns)
	LA 1,881,800	1,536,400 (ns)	349,300	342,600 (ns)	1,546,600 (ns)
	US 136,745,000	114,645,000	22,100,000	22,573,000	114,172,000

Continued on next page...

**Table 22a: Number of Non-farm Employed People in New Orleans MSA, Louisiana, & the U.S., by Industry: Totals, continued**

Month		Total nonfarm	Source of Industry		Type of Industry	
			Private	Government	Goods Producing	Service Providing
Nov-06	MSA	495,100 (ns)	420,000 (ns)	75,100 (ns)	75,900 (ns)	419,200 (ns)
	LA	1,885,100	1,542,300 (ns)	349,300	341,500 (ns)	1,554,100 (ns)
	US	136,941,000	114,835,000	22,106,000	22,525,000	114,416,000
Dec-06	MSA	497,100 (ns)	421,800 (ns)	75,300 (ns)	76,900 (ns)	420,200 (ns)
	LA	1,886,800	1,545,700 (ns)	349,600	341,900 (ns)	1,556,300 (ns)
	US	137,167,000	115,053,000	22,114,000	22,520,000	114,647,000
Jan-07	MSA	495,900 (ns)	421,100 (ns)	74,800 (ns)	76,800 (ns)	419,100 (ns)
	LA	1,893,300 (p)	1,533,300 (ns)	350,000 (p)	337,000 (ns)	1,544,400 (ns)
	US	137,329,000	115,189,000	22,140,000	22,554,000	114,775,000
Feb-07	MSA	496,200 (ns,p)	421,100 (ns,p)	75,100 (ns,p)	76,400 (ns,p)	419,800 (ns,p)
	LA	1,899,000 (p)	1,538,000 (ns,p)	352,200 (p)	337,900 (ns,p)	1,555,600 (ns,p)
	US	137,442,000 (p)	115,269,000 (p)	22,173,000 (p)	22,487,000 (p)	114,955,000 (p)
Mar-07	MSA			Next update: 5/2007		
	LA			Next update: 5/2007		
	US	137,622,000 (p)	115,426,000 (p)	22,196,000 (p)	22,530,000 (p)	115,092,000 (p)

Sources: Louisiana Department of Labor, U.S. Bureau of Labor Statistics.

Notes: Numbers in parentheses refer to percentage of total non-farm employment represented by occupation; (p): preliminary; (ns): not seasonally adjusted.

**Table 22b: Number of Non-farm Employed People in New Orleans MSA, Louisiana, and the U.S., by Industry: Service Providing Industries**

Month		Education & health services	Financial activities	Information	Leisure & hospitality	Other services	Professional & business services	Trade, transportation, & utilities
Jun-05	MSA	82,900 (ns)	32,800 (ns)	9,800 (ns)	88,600 (ns)	22,500 (ns)	75,200 (ns)	122,000 (ns)
	LA	256,500	99,600	29,300	211,800	71,500	190,500	382,600
	US	17,363,000	8,124,000	3,058,000	12,837,000	5,400,000	16,893,000	25,964,000
Jul-05	MSA	79,400 (ns)	32,900 (ns)	10,100 (ns)	85,800 (ns)	22,600 (ns)	74,100 (ns)	121,100 (ns)
	LA	255,900	100,100	30,000	211,400	71,900	193,100	386,500
	US	17,413,000	8,151,000	3,058,000	12,859,000	5,405,000	16,973,000	26,040,000
Aug-05	MSA	78,400 (ns)	33,000 (ns)	10,500 (ns)	85,600 (ns)	22,400 (ns)	73,800 (ns)	120,600 (ns)
	LA	255,200	100,100	29,800	211,400	71,800	193,000	386,300
	US	17,456,000	8,172,000	3,058,000	12,888,000	5,403,000	17,017,000	26,066,000
Sep-05	MSA	64,400 (ns)	27,600 (ns)	9,000 (ns)	51,700 (ns)	15,500 (ns)	54,000 (ns)	88,600 (ns)
	LA	239,000	95,000	29,200	179,500	64,900	176,100	354,800
	US	17,486,000	8,183,000	3,062,000	12,871,000	5,401,000	17,109,000	26,049,000
Oct-05	MSA	51,100 (ns)	26,200 (ns)	7,300 (ns)	42,200 (ns)	13,300 (ns)	55,600 (ns)	84,100 (ns)
	LA	222,000	95,900	26,400	169,100	62,100	181,700	349,500
	US	17,499,000	8,221,000	3,052,000	12,847,000	5,388,000	17,140,000	26,052,000
Nov-05	MSA	50,200 (ns)	26,100 (ns)	7,400 (ns)	44,100 (ns)	13,300 (ns)	59,100 (ns)	89,900 (ns)
	LA	220,400	96,500	26,900	171,500	62,800	185,100	357,700
	US	17,548,000	8,244,000	3,052,000	12,896,000	5,392,000	17,217,000	26,109,000
Dec-05	MSA	50,900 (ns)	25,900 (ns)	7,700 (ns)	46,300 (ns)	13,900 (ns)	61,100 (ns)	94,300 (ns)
	LA	223,200	96,100	27,200	173,500	63,900	187,200	361,200
	US	17,573,000	8,250,000	3,054,000	12,918,000	5,401,000	17,293,000	26,132,000
Jan-06	MSA	53,000 (ns)	25,700 (ns)	7,100 (ns)	47,300 (ns)	13,700 (ns)	60,700 (ns)	94,700 (ns)
	LA	225,400	96,000	27,200	175,200	63,300	187,900	364,600
	US	17,621,000	8,271,000	3,052,000	12,948,000	5,417,000	17,316,000	26,157,000
Feb-06	MSA	52,900 (ns)	25,800 (ns)	7,300 (ns)	51,200 (ns)	14,300 (ns)	62,800 (ns)	96,700 (ns)
	LA	226,800	95,800	27,300	180,100	64,200	189,800	367,100
	US	17,666,000	8,298,000	3,058,000	12,981,000	5,417,000	17,387,000	26,187,000
Mar-06	MSA	54,200 (ns)	26,100 (ns)	8,800 (ns)	54,100 (ns)	14,700 (ns)	64,400 (ns)	99,300 (ns)
	LA	228,300	95,900	29,200	182,500	64,600	191,000	371,000
	US	17,709,000	8,314,000	3,058,000	13,022,000	5,421,000	17,431,000	26,225,000
Apr-06	MSA	55,300 (ns)	25,800 (ns)	8,100 (ns)	54,900 (ns)	15,100 (ns)	64,700 (ns)	101,500 (ns)
	LA	229,700	95,500	28,500	181,900	64,600	190,500	370,900
	US	17,743,000	8,340,000	3,056,000	13,049,000	5,424,000	17,458,000	26,207,000

*Continued on next page...*

**Table 22b: Number of Non-farm Employed People in New Orleans MSA, Louisiana, and the U.S., by Industry: Service Providing Industries, continued**

Month		Education & health services	Financial activities	Information	Leisure & hospitality	Other services	Professional & business services	Trade, transportation, & utilities
May-06	MSA	55,800 (ns)	26,100 (ns)	8,300 (ns)	56,500 (ns)	15,400 (ns)	65,300 (ns)	102,800 (ns)
	LA	231,900	95,800	28,400	182,300	65,400	193,300	372,400
	US	17,776,000	8,352,000	3,048,000	13,074,000	5,432,000	17,499,000	26,194,000
Jun-06	MSA	55,500 (ns)	26,400 (ns)	7,500 (ns)	59,900 (ns)	15,700 (ns)	66,500 (ns)	104,700 (ns)
	LA	233,900	95,800	27,400	184,900	65,800	194,500	374,400
	US	17,794,000	8,348,000	3,048,000	13,092,000	5,431,000	17,539,000	26,197,000
Jul-06	MSA	55,300 (ns)	26,500 (ns)	6,600 (ns)	60,400 (ns)	15,900 (ns)	65,500 (ns)	104,400 (ns)
	LA	235,700	94,900	25,800	185,900	65,900	195,100	375,500
	US	17,828,000	8,368,000	3,043,000	13,156,000	5,427,000	17,592,000	26,226,000
Aug-06	MSA	56,300 (ns)	26,600 (ns)	6,600 (ns)	60,800 (ns)	16,100 (ns)	66,500 (ns)	104,800 (ns)
	LA	238,000	95,200	25,100	187,000	66,400	195,900	376,600
	US	17,894,000	8,379,000	3,051,000	13,188,000	5,430,000	17,617,000	26,227,000
Sep-06	MSA	58,800 (ns)	26,600 (ns)	6,700 (ns)	60,100 (ns)	16,300 (ns)	66,100 (ns)	104,800 (ns)
	LA	239,000	95,600	26,400	187,300	67,200	197,300	378,100
	US	17,946,000	8,408,000	3,052,000	13,209,000	5,443,000	17,636,000	26,241,000
Oct-06	MSA	58,800 (ns)	26,500 (ns)	6,700 (ns)	60,200 (ns)	16,500 (ns)	66,900 (ns)	105,700 (ns)
	LA	239,500	96,300	25,500	187,700	67,600	198,000	377,900
	US	17,976,000	8,415,000	3,054,000	13,257,000	5,450,000	17,662,000	26,258,000
Nov-06	MSA	59,200 (ns)	26,600 (ns)	6,700 (ns)	60,800 (ns)	16,600 (ns)	68,100 (ns)	106,100 (ns)
	LA	240,300	96,600	25,600	189,500	67,800	198,300	377,300
	US	18,018,000	8,422,000	3,057,000	13,324,000	5,443,000	17,726,000	26,320,000
Dec-06	MSA	58,700 (ns)	26,800 (ns)	6,700 (ns)	60,700 (ns)	16,800 (ns)	68,700 (ns)	106,500 (ns)
	LA	240,700	96,700	25,600	189,400	67,900	199,300	376,900
	US	18,063,000	8,438,000	3,073,000	13,373,000	5,449,000	17,792,000	26,345,000
Jan-07	MSA	59,100 (ns)	26,700 (ns)	6,800 (ns)	61,300 (ns)	16,600 (ns)	68,400 (ns)	105,400 (ns)
	LA	241,700	97,200	25,500	191,700	67,900	198,900	381,100
	US	18,102,000	8,440,000	3,071,000	13,396,000	5,444,000	17,804,000	26,378,000
Feb-07	MSA	59,800 (ns,p)	26,800 (ns,p)	6,800 (ns,p)	60,900 (ns,p)	16,600 (ns,p)	68,400 (ns,p)	105,400 (ns,p)
	LA	243,200 (p)	97,300 (p)	26,000 (p)	190,000 (p)	68,800 (p)	197,900 (p)	382,300 (p)
	US	18,136,000 (p)	8,451,000 (p)	3,083,000 (p)	13,428,000 (p)	5,449,000 (p)	17,836,000 (p)	26,399,000 (p)
Mar-07	MSA	Next update: 5/2007						
	LA	Next update: 5/2007						
	US	18,190,000 (p)	8,451,000 (p)	3,078,000 (p)	13,449,000 (p)	5,453,000 (p)	17,829,000 (p)	26,446,000 (p)

Sources: Louisiana Department of Labor, U.S. Bureau of Labor Statistics.

Notes: (p): preliminary; (ns): not seasonally adjusted.

**Table 22c: Number of Non-farm Employed People in New Orleans MSA, Louisiana, and the U.S., by Industry: Goods Producing Industries**

Month		Construction	Manufacturing	Natural resources & mining
Jun-05	MSA	30,000 (ns)	39,000 (ns)	8,600 (ns)
	LA	120,800	154,600	46,000 (ns)
	US	7,331,000	14,224,000	624,000
Jul-05	MSA	29,800 (ns)	38,900 (ns)	8,400 (ns)
	LA	121,200	154,800	45,800 (ns)
	US	7,348,000	14,221,000	626,000
Aug-05	MSA	29,700 (ns)	39,000 (ns)	8,500 (ns)
	LA	121,700	155,000	46,000 (ns)
	US	7,386,000	14,204,000	629,000
Sep-05	MSA	21,800 (ns)	30,600 (ns)	8,100 (ns)
	LA	115,200	145,800	45,700 (ns)
	US	7,422,000	14,182,000	635,000
Oct-05	MSA	25,800 (ns)	31,600 (ns)	8,300 (ns)
	LA	118,200	146,500	45,400 (ns)
	US	7,478,000	14,197,000	641,000
Nov-05	MSA	28,400 (ns)	32,100 (ns)	8,300 (ns)
	LA	121,600	147,500	45,100 (ns)
	US	7,539,000	14,198,000	647,000
Dec-05	MSA	29,400 (ns)	33,400 (ns)	8,400 (ns)
	LA	124,200	148,900	45,300 (ns)
	US	7,550,000	14,209,000	651,000
Jan-06	MSA	30,600 (ns)	33,000 (ns)	7,900 (ns)
	LA	127,400	150,200	46,400 (ns)
	US	7,615,000	14,219,000	655,000
Feb-06	MSA	31,100 (ns)	33,400 (ns)	8,000 (ns)
	LA	128,600	150,700	46,900 (ns)
	US	7,668,000	14,212,000	661,000
Mar-06	MSA	32,200 (ns)	33,600 (ns)	8,100 (ns)
	LA	129,500	151,200	47,300 (ns)
	US	7,692,000	14,212,000	669,000
Apr-06	MSA	32,700 (ns)	33,700 (ns)	8,100 (ns)
	LA	130,100	150,900	47,200 (ns)
	US	7,699,000	14,227,000	678,000
May-06	MSA	32,900 (ns)	33,800 (ns)	8,000 (ns)
	LA	131,100	150,800	47,600 (ns)
	US	7,698,000	14,215,000	680,000
Jun-06	MSA	33,600 (ns)	34,400 (ns)	8,100 (ns)
	LA	133,900	151,800	48,700 (ns)
	US	7,691,000	14,238,000	684,000
Jul-06	MSA	31,600 (ns)	34,900 (ns)	8,500 (ns)
	LA	131,800	151,300	49,400 (ns)
	US	7,703,000	14,229,000	690,000
Aug-06	MSA	32,200 (ns)	35,200 (ns)	8,500 (ns)
	LA	133,800	152,600	50,000 (ns)
	US	7,719,000	14,218,000	692,000
Sep-06	MSA	32,000 (ns)	35,300 (ns)	8,700 (ns)
	LA	134,400	153,600	50,700 (ns)
	US	7,725,000	14,206,000	694,000

*Continued on next page...*

**Table 22c: Number of Non-farm Employed People in New Orleans MSA, Louisiana, and the U.S., by Industry: Goods Producing Industries, continued**

Month		Construction	Manufacturing	Natural resources &
Oct-06	MSA	32,300 (ns)	35,600 (ns)	8,700 (ns)
	LA	134,000	155,000	51,000 (ns)
	US	7,707,000	14,166,000	700,000
Nov-06	MSA	31,900 (ns)	35,400 (ns)	8,600 (ns)
	LA	134,600	155,000	50,800 (ns)
	US	7,683,000	14,143,000	699,000
Dec-06	MSA	32,500 (ns)	35,700 (ns)	8,700 (ns)
	LA	134,800	155,000	50,900 (ns)
	US	7,684,000	14,131,000	705,000
Jan-07	MSA	32,500 (ns)	35,700 (ns)	8,600 (ns)
	LA	134,600	154,100	50,600 (ns)
	US	7,718,000	14,130,000	706,000
Feb-07	MSA	32,100 (ns,p)	35,600 (ns,p)	8,700 (ns,p)
	LA	134,800 (p)	155,700 (p)	50,800 (ns,p)
	US	7,657,000 (p)	14,119,000 (p)	711,000 (p)
Feb-07	MSA	Next update: 5/2007		
	LA	Next update: 5/2007		
	US	7,713,000 (p)	14,103,000 (p)	714,000 (p)

Sources: Louisiana Department of Labor, U.S. Bureau of Labor Statistics.

Notes: (p): preliminary; (ns): not seasonally adjusted.

**Table 22d: Number of Non-farm Employed People in Government in New Orleans MSA, Louisiana, & the U.S., by Level of Government**

Month		Level of Government		
		Federal	State	Local
Jun-05	MSA	15,700 (ns)	25,700 (ns)	63,500 (ns)
	LA	34,200 (ns)	119,900	225,900
	US	2,732,000	5,030,000	14,030,000
Jul-05	MSA	15,600 (ns)	26,100 (ns)	59,700 (ns)
	LA	34,100 (ns)	121,400	224,300
	US	2,730,000	5,040,000	14,073,000
Aug-05	MSA	15,600 (ns)	26,700 (ns)	59,900 (ns)
	LA	34,100 (ns)	121,500	225,000
	US	2,733,000	5,037,000	14,090,000
Sep-05	MSA	15,300 (ns)	26,900 (ns)	59,700 (ns)
	LA	33,800 (ns)	119,900	223,800
	US	2,733,000	5,039,000	14,072,000
Oct-05	MSA	14,700 (ns)	21,100 (ns)	44,500 (ns)
	LA	33,500 (ns)	114,200	208,900
	US	2,736,000	5,037,000	14,063,000
Nov-05	MSA	14,500 (ns)	20,800 (ns)	44,700 (ns)
	LA	33,600 (ns)	114,000	208,600
	US	2,743,000	5,046,000	14,071,000
Dec-05	MSA	14,200 (ns)	20,700 (ns)	44,700 (ns)
	LA	33,300 (ns)	114,300	208,500
	US	2,732,000	5,057,000	14,084,000
Jan-06	MSA	13,400 (ns)	14,900 (ns)	44,400 (ns)
	LA	32,600 (ns)	107,200	207,200
	US	2,725,000	5,034,000	14,080,000
Feb-06	MSA	13,400 (ns)	15,200 (ns)	44,200 (ns)
	LA	32,800 (ns)	107,100	207,300
	US	2,731,000	5,053,000	14,091,000
Mar-06	MSA	13,100 (ns)	15,800 (ns)	44,600 (ns)
	LA	32,900 (ns)	107,200	207,300
	US	2,731,000	5,060,000	14,115,000
Apr-06	MSA	12,900 (ns)	16,200 (ns)	44,300 (ns)
	LA	32,600 (ns)	107,000	206,800
	US	2,731,000	5,064,000	14,127,000
May-06	MSA	12,900 (ns)	16,400 (ns)	44,300 (ns)
	LA	32,800 (ns)	107,600	206,800
	US	2,729,000	5,073,000	14,136,000
Jun-06	MSA	12,600 (ns)	16,000 (ns)	44,400 (ns)
	LA	32,600 (ns)	107,600	206,000
	US	2,733,000	5,075,000	14,160,000
Jul-06	MSA	12,300 (ns)	16,100 (ns)	43,700 (ns)
	LA	32,200 (ns)	107,300	207,100
	US	2,739,000	5,078,000	14,173,000
Aug-06	MSA	12,200 (ns)	16,500 (ns)	43,700 (ns)
	LA	31,900 (ns)	108,100	207,700
	US	2,730,000	5,088,000	14,205,000
Sep-06	MSA	12,700 (ns)	17,800 (ns)	44,800 (ns)
	LA	32,300 (ns)	109,600	208,400
	US	2,729,000	5,113,000	14,234,000

Continued on next page...

**Table 22d: Number of Non-farm Employed People in Government in New Orleans MSA, Louisiana, & the U.S., by Level of Government, continued**

Month		Level of Government		
		<i>Federal</i>	<i>State</i>	<i>Local</i>
Oct-06	MSA	11,800 (ns)	18,000 (ns)	45,100 (ns)
	LA	31,600 (ns)	110,700	207,000
	US	2,725,000	5,109,000	14,266,000
Nov-06	MSA	11,700 (ns)	18,000 (ns)	45,400 (ns)
	LA	31,500 (ns)	111,100	206,400
	US	2,719,000	5,107,000	14,280,000
Dec-06	MSA	11,700 (ns)	18,200 (ns)	45,400 (ns)
	LA	31,400 (ns)	111,600	206,400
	US	2,713,000	5,111,000	14,290,000
Jan-07	MSA	11,600 (ns)	17,900 (ns)	45,300 (ns)
	LA	31,100 (ns)	113,000	205,900
	US	2,718,000	5,117,000	14,305,000
Feb-07	MSA	11,500 (ns,p)	18,100 (ns,p)	45,500 (ns,p)
	LA	31,000 (ns,p)	114,900 (p)	206,500 (p)
	US	2,719,000 (p)	5,133,000 (p)	14,321,000 (p)
Mar-07	MSA	Next update: 5/2007		
	LA	Next update: 5/2007		
	US	2,720,000 (p)	5,139,000 (p)	14,337,000 (p)

Sources: Louisiana Department of Labor, U.S. Bureau of Labor Statistics.

Notes: (p): preliminary; (ns): not seasonally adjusted.

**Table 23a: Average Weekly Wage, by Industry Sectors: A-F**

Quarter		Accommodation & food services	Administrative & waste services	Agriculture, forestry, fishing, hunting	Arts, entertainment, & recreation	Construction	Educational services	Finance & insurance
Q4 2004	Orleans	\$341	526	444	619	863	740	986
	RLMA 1	294	496	529	750	754	660	970
	Louisiana	250	476	498	552	721	582	856
	U.S.	295	562	473	656	864	698	1,394
Q1 2005	Orleans	343	578	432	664	715	793	1,299
	RLMA 1	293	496	400	700	685	688	1,078
	Louisiana	244	457	440	530	659	532	866
	U.S.	281	520	421	514	749	664	1,744
Q2 2005	Orleans	339	418	424	558	708	759	1,016
	RLMA 1	290	433	423	493	684	667	939
	Louisiana	247	435	458	433	659	579	801
	U.S.	286	525	430	481	775	691	1,218
Q3 2005	Orleans	335	523	501	553	752	787	1,036
	RLMA 1	287	489	431	598	680	675	938
	Louisiana	247	459	451	489	662	654	790
	U.S.	299	547	444	504	815	744	1,246
Q4 2005	Orleans	430	914	713	688	1,118	846	1,481
	RLMA 1	349	737	601	969	913	674	1,286
	Louisiana	271	591	524	618	793	668	1,004
	U.S.	300	570	481	678	892	707	1,440
Q1 2006	Orleans	440	1,180	425	540	997	1,012	1,449
	RLMA 1	354	802	457	769	864	721	1,153
	Louisiana	271	618	488	532	769	618	947
	U.S.	300	564	453	572	823	704	1,988
Q2 2006	Orleans	423	771	426	572	1,010	858	1,191
	RLMA 1	344	637	462	584	857	707	1,033
	Louisiana	272	563	491	449	785	604	854
	U.S.	296	549	451	517	820	715	1,280

Sources: Louisiana Department of Labor; U.S. Bureau of Labor Statistics, U.S. Department of Labor

Notes: RLMA 1 = Regional Labor Market Area 1 (New Orleans Region). U.S. occupation data only aligns with the data at a lower level of geography in two cases. Quarterly data for the U.S. was found by taking an average of the months belonging to that quarter. The most recently published numbers are preliminary. With the exception of the public administration industry, numbers reflect average weekly wages in the private sector only. Public administration numbers reflect wages paid by local government only. For wage data pertaining to occupations owned by local, state, or federal government, please visit the source noted above.

**Table 23b: Average Weekly Wage, by Industry Sectors: H-O**

Quarter		Health care & social assistance	Information	Management	Manufacturing	Mining	Other services except public administration
Q4 2004	Orleans	\$792	649	1,199	\$995	1,839	503
	RLMA 1	750	747	1,082	997	1,489	527
	Louisiana	663	780	1,002	970	1,211	496
	U.S.	785	1,240	1,639	985	1,362	518
Q1 2005	Orleans	652	707	1,626	930	2,395	444
	RLMA 1	640	751	1,329	1,037	1,831	455
	Louisiana	545	757	1,131	956	1,277	434
	U.S.	664	1,245	1,842	940	1,463	474
Q2 2005	Orleans	674	745	1,235	899	1,911	452
	RLMA 1	677	736	1,069	968	1,593	460
	Louisiana	575	719	967	918	1,172	447
	U.S.	706	1,135	1,531	914	1,281	488
Q3 2005	Orleans	741	788	1,450	948	1,989	470
	RLMA 1	719	766	1,298	1,022	1,627	476
	Louisiana	605	778	1,253	937	1,245	454
	U.S.	745	1,208	1,540	946	1,377	505
Q4 2005	Orleans	854	905	1,446	1,069	1,948	663
	RLMA 1	812	959	1,201	1,064	1,614	629
	Louisiana	677	876	1,112	992	1,280	528
	U.S.	793	1,248	1,649	991	1,437	525
Q1 2006	Orleans	853	757	1,595	1,084	2,948	588
	RLMA 1	758	928	1,276	1,149	2,225	582
	Louisiana	590	860	1,194	1,038	1,460	499
	U.S.	715	1,375	2,004	1,023	1,650	507
Q2 2006	Orleans	868	734	1,384	1,046	2,117	559
	RLMA 1	799	840	1,112	1,080	1,711	568
	Louisiana	628	770	1,012	962	1,336	511
	U.S.	738	1,188	1,590	952	1,451	509

Sources: Louisiana Department of Labor; U.S. Bureau of Labor Statistics, U.S. Department of Labor

Notes: RLMA 1 = Regional Labor Market Area 1 (New Orleans Region). U.S. occupation data only aligns with the data at a lower level of geography in two cases. Quarterly data for the U.S. was found by taking an average of the months belonging to that quarter. The most recently published numbers are preliminary. With the exception of the public administration industry, numbers reflect average weekly wages in the private sector only. Public administration numbers reflect wages paid by local government only. For wage data pertaining to occupations owned by local, state, or federal government, please visit the source noted above.

**Table 23c: Average Weekly Wage, by Industry Sectors P-W**

Quarter		Professional & technical services	Local Public administration	Real estate, rental & leasing	Retail trade	Transportation & warehousing	Utilities	Wholesale trade
Q4 2004	Orleans	\$1406	856	606	467	901	1,098	1,023
	RLMA 1	1,237	782	647	443	890	1,080	983
	Louisiana	1,077	581	667	419	808	1,181	889
	U.S.	1,398	817	809	497	802	1,404	1,128
Q1 2005	Orleans	1,030	867	534	412	818	1,264	1,070
	RLMA 1	981	771	575	405	807	1,261	967
	Louisiana	785	542	598	384	751	1,353	835
	U.S.	1,171	758	741	457	718	1,607	1,046
Q2 2005	Orleans	1,032	823	540	430	852	1,200	970
	RLMA 1	944	756	592	428	826	1,119	938
	Louisiana	830	543	607	405	771	1,116	820
	U.S.	1,185	770	710	474	742	1,365	1,005
Q3 2005	Orleans	1,059	862	574	425	866	1,279	1,014
	RLMA 1	958	825	622	420	857	1,232	969
	Louisiana	839	590	635	404	797	1,241	844
	U.S.	1,225	818	744	490	782	1,405	1,048
Q4 2005	Orleans	1,475	1,027	732	552	1,039	1,286	1,170
	RLMA 1	1,274	892	816	548	976	1,181	1,114
	Louisiana	1,075	585	751	462	872	1,174	947
	U.S.	1,435	827	835	495	795	1,408	1,151
Q1 2006	Orleans	1,128	965	740	555	960	1,307	1,286
	RLMA 1	1,022	862	755	530	944	1,218	1,162
	Louisiana	857	575	724	450	858	1,288	960
	U.S.	1,273	823	832	488	770	1,769	1,133
Q2 2006	Orleans	1,126	1,038	760	532	1,049	1,108	1,152
	RLMA 1	1,032	883	736	521	958	1,123	1,065
	Louisiana	891	570	707	448	870	1,086	902
	U.S.	1,236	806	754	486	772	1,400	1,058

Sources: Louisiana Department of Labor; U.S. Bureau of Labor Statistics, U.S. Department of Labor

Notes: RLMA 1 = Regional Labor Market Area 1 (New Orleans Region). U.S. occupation data only aligns with the data at a lower level of geography in two cases. Quarterly data for the U.S. was found by taking an average of the months belonging to that quarter. The most recently published numbers are preliminary. With the exception of the public administration industry, numbers reflect average weekly wages in the private sector only. Public administration numbers reflect wages paid by local government only. For wage data pertaining to occupations owned by local, state, or federal government, please visit the source noted above.

**Table 24a: Delinquency and Foreclosure Rates for Subprime Loans in Louisiana & the U.S.**

Quarter		Total Past Due	30 Days Past Due	60 Days Past Due	90 Days Past Due	Foreclosures Started	Foreclosures at End of Quarter
Q1 2004	Louisiana	15.0%	8.2	2.1	4.7	2.2	6.5
	U.S.	10.3	5.7	1.7	2.9	1.7	4.9
Q2 2004	Louisiana	15.1	8.3	2.5	4.3	1.5	6.3
	U.S.	10.6	6.2	1.8	2.7	1.3	4.4
Q3 2004	Louisiana	16.3	9.1	2.9	4.3	1.8	5.3
	U.S.	11.0	6.5	2.0	2.6	1.4	3.9
Q4 2004	Louisiana	16.0	8.8	2.7	4.5	2.0	5.5
	U.S.	11.1	6.4	2.0	2.7	1.5	3.8
Q1 2005	Louisiana	13.7	7.4	2.2	4.1	1.7	4.9
	U.S.	9.5	5.4	1.7	2.5	1.4	3.5
Q2 2005	Louisiana	14.3	8.1	2.4	3.9	1.7	4.6
	U.S.	10.4	6.0	1.9	2.5	1.3	3.3
Q3 2005	Louisiana	36.6	25.7	5.7	5.3	1.4	4.2
	U.S.	11.1	6.6	2.1	2.4	1.5	3.3
Q4 2005	Louisiana	33.9	7.9	5.5	20.5	0.5	3.9
	U.S.	11.6	6.5	2.2	2.9	1.5	3.3
Q1 2006	Louisiana	26.0	7.0	3.5	15.6	0.5	3.7
	U.S.	10.4	5.8	1.9	2.7	1.6	3.5
Q2 2006	Louisiana	22.5	7.3	3.3	12.0	0.8	5.8
	U.S.	11.6	6.7	2.3	2.7	1.6	3.6
Q3 2006	Louisiana	21.3	7.7	3.2	10.3	1.1	5.5
	U.S.	13.0	7.4	2.7	2.9	1.9	3.9
Q4 2006	Louisiana	Next update: Spring 2007					
	U.S.	Next update: Spring 2007					

Source: Mortgage Bankers Association.

Note: A subprime loan is a loan that is offered at a rate above prime to individuals who do not qualify for prime rate loans.

**Table 24b: Delinquency and Foreclosure Rates for Prime Loans in Louisiana & the U.S.**

Quarter		Total Past Due	30 Days Past Due	60 Days Past Due	90 Days Past Due	Foreclosures Started	Foreclosures at End of Quarter
Q1 2004	Louisiana	3.1%	2.2	0.4	0.4	0.3	0.8
	U.S.	2.1	1.5	0.3	0.3	0.2	0.5
Q2 2004	Louisiana	3.5	2.6	0.5	0.4	0.3	0.7
	U.S.	2.3	1.7	0.4	0.3	0.2	0.5
Q3 2004	Louisiana	3.8	2.8	0.6	0.4	0.3	0.7
	U.S.	2.4	1.7	0.4	0.3	0.2	0.5
Q4 2004	Louisiana	3.8	2.7	0.6	0.5	0.4	0.8
	U.S.	2.4	1.7	0.4	0.3	0.2	0.5
Q1 2005	Louisiana	3.3	2.4	0.5	0.4	0.3	0.7
	U.S.	2.0	1.4	0.3	0.3	0.2	0.5
Q2 2005	Louisiana	3.4	2.4	0.5	0.4	0.3	0.7
	U.S.	2.2	1.6	0.3	0.3	0.2	0.4
Q3 2005	Louisiana	19.7	17.6	1.3	0.8	0.2	0.7
	U.S.	2.4	1.7	0.4	0.3	0.2	0.4
Q4 2005	Louisiana	16.1	4.3	2.7	9.1	0.6	9.7
	U.S.	2.5	1.7	0.4	0.4	0.2	0.4
Q1 2006	Louisiana	9.7	3.0	1.4	5.3	0.1	0.5
	U.S.	2.0	1.3	0.3	0.4	0.2	0.4
Q2 2006	Louisiana	6.7	2.7	0.9	3.1	0.2	0.6
	U.S.	2.2	1.6	0.4	0.3	0.2	0.4
Q3 2006	Louisiana	5.6	2.8	0.8	2.0	0.2	0.7
	U.S.	2.5	1.8	0.4	0.4	0.2	0.4
Q4 2006	Louisiana						
	U.S.						

Next update: Spring 2007

Next update: Spring 2007

Source: Mortgage Bankers Association.

**Table 24c: Delinquency and Foreclosure Rates for All Loans in Louisiana & the U.S.**

Quarter		Total Past Due	30 Days Past Due	60 Days Past Due	90 Days Past Due	Foreclosures Started	Foreclosures at End of Quarter
Q1 2004	Louisiana	6.0%	3.8	0.9	1.3	0.6	1.8
	U.S.	4.1	2.6	0.7	0.9	0.5	1.3
Q2 2004	Louisiana	6.9	4.5	1.2	1.3	0.6	1.8
	U.S.	4.5	2.9	0.8	0.9	0.4	1.2
Q3 2004	Louisiana	7.5	4.8	1.3	1.3	0.6	1.7
	U.S.	4.7	3.0	0.8	0.9	0.4	1.2
Q4 2004	Louisiana	7.5	4.7	1.3	1.5	0.7	1.7
	U.S.	4.7	3.0	0.8	0.9	0.5	1.2
Q1 2005	Louisiana	6.3	4.0	1.0	1.3	0.6	1.6
	U.S.	3.9	2.4	0.7	0.8	0.4	1.1
Q2 2005	Louisiana	6.7	4.2	1.1	1.3	0.5	1.4
	U.S.	4.3	2.7	0.8	0.8	0.4	1.0
Q3 2005	Louisiana	24.6	20.0	2.6	2.0	0.5	1.4
	U.S.	4.6	3.0	0.8	0.9	0.4	1.0
Q4 2005	Louisiana	20.8	5.3	3.4	12.1	0.2	1.3
	U.S.	4.7	2.9	0.8	1.0	0.4	1.0
Q1 2006	Louisiana	13.7	4.0	1.8	7.9	0.2	1.2
	U.S.	4.0	2.3	0.7	1.0	0.4	1.0
Q2 2006	Louisiana	10.7	3.9	1.4	5.3	0.3	1.5
	U.S.	4.4	2.7	0.8	0.9	0.4	1.0
Q3 2006	Louisiana	9.5	4.2	1.4	4.0	0.4	1.7
	U.S.	4.8	3.0	0.9	1.0	0.5	1.1
Q4 2006	Louisiana						
	U.S.						

Next update: Spring 2007

Next update: Spring 2007

Source: Mortgage Bankers Association.

**Table 25: Quarterly Personal Income in Louisiana & the U.S.**

Quarter	Louisiana		United States	
	Total Income*	% Change	Total Income*	% Change
Q2 2004	\$120,972	n.a.	9,626,515	n.a.
Q3 2004	122,387	0.9	9,753,508	1.2
Q4 2004	124,988	2.5	10,005,070	3.0
Q1 2005	124,577	1.3	10,034,020	0.6
Q2 2005	125,620	0.8	10,146,966	1.1
Q3 2005	63,208 ( r )	-49.5	10,244,098 ( r )	1.0
Q4 2005	131,710 ( r )	108.4	10,464,671 ( r )	2.2
Q1 2006	130,410 ( r )	-1.0	10,698,166 ( r )	2.2
Q2 2006	131,429 ( r )	0.8	10,785,484 ( r )	0.8
Q3 2006	133,432 ( r )	1.5	10,916,560 ( r )	1.2
Q4 2006	135,587 ( p )	1.6	11,043,456 ( p )	1.2
Q1 2007	Next update: 7/2007			

Source: Bureau of Economic Analysis, State Quarterly Income Estimates.

Note: % Change is from previous quarter. (r): revised; (p): preliminary.

\*In millions of dollars.

**Table 26: Number of Open Hotels in New Orleans**

Month	Open Hotels	% Reopened
Pre-Katrina	142	
Sep-05	30	21%
Oct-05	71	50%
Nov-05	88	62%
Dec-05	94	66%
Jan-06	98	69%
Feb-06	109	77%
Mar-06	112	79%
Apr-06	116	82%
May-06	116	82%
Jun-06	116	82%
Jul-06	116	82%
Aug-06	117	82%
Sep-06	119	84%
Oct-06	123	87%
Nov-06	125	88%
Dec-06	127	89%
Jan-07	128	90%
Feb-07	128	90%
Mar-07	129	91%
Apr-07	130	92%

Source: Major area hotels.

**Table 27: Proportion of Open Retail Food Establishments in New Orleans Metro**

Month	Proportion of open retail food establishments
Pre-Katrina	100%
Nov-05	31%
Dec-05	32%
Jan-06	35%
Feb-06	37%
Mar-06	39%
Apr-06	41%
Mar-06	42%
Jun-06	43%
Jul-06	44%
Aug-06	46%
Sep-06	Not currently available

Source: Louisiana Restaurant Association.

Note: The Louisiana Restaurant Association defines the New Orleans metro to include Orleans, Jefferson, and St. Bernard parishes; these data reflect the proportion of open retail food establishments in these places only.

**Table 28: Number of Passengers Arriving & Departing from Louis Armstrong New Orleans International Airport**

Month		Domestic	International	Charter	Total
Jun-05	Arriving	438,607	2,833	2,369	443,809
	Departing	420,433	3,080	1,834	425,347
Jul-05	Arriving	436,836	3,267	1,253	441,356
	Departing	435,895	3,110	1,191	440,196
Aug-05	Arriving	352,789	1,879	399	355,067
	Departing	359,231	1,848	216	361,295
Sep-05	Arriving	18,871	0	95	18,966
	Departing	22,735	0	497	23,232
Oct-05	Arriving	97,538	0	0	97,538
	Departing	96,797	0	0	96,797
Nov-05	Arriving	149,680	0	478	150,158
	Departing	150,859	0	478	151,337
Dec-05	Arriving	173,707	0	0	173,707
	Departing	177,351	0	0	177,351
Jan-06	Arriving	190,905	0	143	191,048
	Departing	183,811	0	143	183,954
Feb-06	Arriving	190,797	0	2,547	193,344
	Departing	191,287	0	2,540	193,827
Mar-06	Arriving	241,705	0	489	246,598
	Departing	240,493	0	489	240,982
Apr-06	Arriving	253,927	0	60	253,987
	Departing	247,995	0	60	248,055
May-06	Arriving	270,859	0	342	271,201
	Departing	283,311	0	847	284,158
Jun-06	Arriving	286,102	0	1,261	287,363
	Departing	292,220	0	956	293,176
Jul-06	Arriving	280,058	0	957	281,015
	Departing	282,105	0	1,058	283,163
Aug-06	Arriving	261,861	0	568	262,429
	Departing	253,589	0	376	253,965
Sep-06	Arriving	231,206	0	861	232,067
	Departing	231,410	0	739	232,149
Oct-06	Arriving	302,237	0	519	302,756
	Departing	296,398	0	519	296,917
Nov-06	Arriving	295,322	0	252	295,574
	Departing	295,862	0	252	296,114
Dec-06	Arriving	283,941	0	2,077	286,018
	Departing	289,911	0	2,256	292,167
Jan-07	Arriving	288,447	0	172	288,619
	Departing	283,595	0	0	283,595
Feb-07	Arriving	284,766	0	1,243	286,009
	Departing	281,611	0	1,268	282,879

Source: New Orleans Aviation Board.

Note: Charter flights can be either domestic or international.

**Table 29: Amount of Air Freight & Mail Transported Through Louis Armstrong New Orleans International Airport**

Month		Domestic	International	Total
Jun-05	Sent	5,437,819 lbs	20,079	5,457,898
	Received	8,453,779	69,561	8,523,340
Jul-05	Sent	5,527,024	44,075	5,571,099
	Received	8,329,596	108,619	8,438,215
Aug-05	Sent	5,431,298	0	5,431,298
	Received	8,198,902	0	8,198,902
Sep-05	Sent	910,247	0	910,247
	Received	2,813,237	0	2,813,237
Oct-05	Sent	2,086,450	5,522	2,091,972
	Received	4,902,716	20,121	4,922,837
Nov-05	Sent	2,996,526	6,428	3,002,954
	Received	5,727,038	23,983	5,750,976
Dec-05	Sent	2,928,433	13,829	2,942,262
	Received	5,406,648	23,982	5,430,630
Jan-06	Sent	3,022,372	5,821	3,028,193
	Received	4,796,947	42,815	4,839,762
Feb-06	Sent	3,543,740	5,749	3,549,489
	Received	5,632,919	35,510	5,668,429
Mar-06	Sent	3,367,026	11,341	3,378,367
	Received	5,696,788	39,365	5,736,153
Apr-06	Sent	3,244,586	5,955	3,250,541
	Received	5,537,826	64,207	5,602,033
May-06	Sent	3,788,466	0	3,788,466
	Received	5,990,661	0	5,990,661
Jun-06	Sent	3,616,512	14,964	3,631,476
	Received	4,916,048	61,072	4,977,120
Jul-06	Sent	3,047,279	18,295	3,065,574
	Received	4,142,947	74,133	4,217,080
Aug-06	Sent	3,506,905	61,918	3,568,823
	Received	5,140,953	14,894	5,155,847
Sep-06	Sent	3,092,627	3,080	3,095,707
	Received	4,684,476	8,793	4,693,269
Oct-06	Sent	2,849,617	27,271	2,876,888
	Received	5,137,843	15,318	5,153,161
Nov-06	Sent	3,036,869	35,888	3,072,757
	Received	5,340,751	16,515	5,357,266
Dec-06	Sent	3,229,574	0	3,229,574
	Received	4,819,758	0	4,819,758
Jan-07	Sent	2,923,195	15,893	2,939,088
	Received	4,374,387	1,434	4,375,821
Feb-07	Sent	3,084,454	1,929	3,086,383
	Received	4,293,622	15,756	4,309,378

Source: New Orleans Aviation Board.

Note: All freight & express on international waybills is reported as international even if no domestic flights.

VIII

# EMERGENCY RESPONSE

VII

**Table 30a: Total FEMA Allocations and Obligations, by Type: A-I**

Date		Administration	Crisis Counseling	Housing Assistance	Infrastructure
9/14/2005	Allocations	4,861,738,393	3,808,395	1,816,250,000	596,440,000
	Obligations	3,466,784,096	1,129,878	1,815,750,000	310,015,001
9/21/2005	Allocations	5,169,480,848	3,808,395	2,277,250,000	994,931,000
	Obligations	3,915,816,199	1,798,273	2,243,750,000	842,694,113
9/28/2005	Allocations	5,310,547,479	31,704,109	4,106,377,400	1,229,763,800
	Obligations	4,278,447,543	6,701,656	4,105,877,400	992,689,666
10/6/2005	Allocations	4,775,293,282	30,215,088	3,271,885,200	1,215,736,945
	Obligations	4,628,450,943	12,176,113	3,271,885,200	1,081,644,301
10/13/2005	Allocations	4,996,758,434	40,588,472	3,303,801,924	1,329,034,545
	Obligations	4,696,118,963	19,468,087	3,303,801,924	1,217,973,301
10/27/2005	Allocations	5,520,925,908	43,184,134	3,344,081,924	1,506,231,640
	Obligations	4,828,098,613	24,341,611	3,314,081,924	1,417,809,123
11/3/2005	Allocations	5,046,048,361	43,184,134	3,342,121,432	1,795,234,537
	Obligations	4,588,886,242	24,341,611	3,332,121,432	1,584,636,325
11/10/2005	Allocations	5,152,370,231	45,167,821	3,871,721,432	1,910,951,106
	Obligations	4,668,743,959	23,993,142	3,861,721,432	1,723,749,539
11/17/2005	Allocations	5,115,509,923	45,167,821	3,871,623,196	2,068,357,658
	Obligations	4,650,788,222	24,019,966	3,861,623,196	1,959,853,974
11/24/2005	Allocations	5,175,776,471	45,167,821	3,822,123,196	2,192,867,658
	Obligations	4,672,380,618	24,019,966	3,786,623,196	2,062,230,513
12/1/2005	Allocations	5,319,561,776	45,167,821	3,848,008,827	2,289,534,799
	Obligations	4,697,041,744	24,019,966	3,838,008,827	2,188,358,520
12/8/2005	Allocations	5,799,810,322	39,981,129	3,788,088,827	2,441,004,399
	Obligations	4,852,897,873	22,649,999	3,788,088,827	2,307,573,660
12/15/2005	Allocations	5,856,615,599	39,981,129	3,528,008,797	2,489,909,722
	Obligations	4,878,933,445	22,649,999	3,480,642,021	2,324,750,141
12/21/2005	Allocations	5,947,120,529	40,911,702	3,578,566,230	2,611,521,347
	Obligations	5,220,449,597	22,649,999	3,515,630,455	2,523,057,923
12/28/2005	Allocations	5,968,176,495	40,911,702	3,609,366,230	2,630,231,281
	Obligations	5,246,655,844	22,649,999	3,608,480,455	2,560,093,415
1/5/2006	Allocations	5,934,161,475	40,911,702	3,648,957,964	2,754,981,281
	Obligations	5,329,919,160	22,717,564	3,648,072,189	2,581,088,627
2/1/2006	Allocations	6,113,037,605	146,631,902	3,834,570,729	3,015,324,267
	Obligations	5,479,981,775	27,461,527	3,833,570,640	2,941,552,889
3/1/2006	Allocations	6,344,001,297	157,272,125	3,935,317,800	3,263,303,669
	Obligations	5,683,331,657	49,074,503	3,935,317,712	3,114,392,325
4/5/2006	Allocations	5,847,489,827	81,188,505	3,960,098,311	4,130,374,015
	Obligations	5,362,303,310	52,341,383	3,959,656,839	4,049,013,904
5/3/2006	Allocations	5,944,999,443	105,315,158	4,000,318,301	4,491,083,387
	Obligations	5,480,965,186	53,044,517	3,994,001,829	4,426,435,328
6/7/2006	Allocations	5,988,329,130	109,905,451	4,056,820,822	4,889,732,173
	Obligations	5,579,492,096	60,521,419	4,056,879,357	4,845,937,462
7/5/2006	Allocations	5,909,677,797	110,403,423	4,072,264,822	5,628,846,641
	Obligations	5,548,192,111	60,521,419	4,072,367,697	5,523,160,949
8/2/2006	Allocations	5,945,795,770	110,738,767	4,084,730,848	5,866,659,732
	Obligations	5,568,997,069	68,500,203	4,082,668,455	5,718,742,649
9/6/2006	Allocations	6,020,066,718	111,252,153	4,110,666,858	6,313,966,384
	Obligations	5,621,560,572	73,362,919	4,108,302,803	6,226,139,364
10/4/2006	Allocations	5,758,638,143	83,245,378	4,133,014,540	7,361,570,868
	Obligations	5,733,400,025	83,245,378	4,126,309,540	7,329,566,129

Source: FEMA Katrina Hurricane Disaster Weekly Report.

Notes: Administration = salaries, travel expenses, equipment, materials, search & rescue operations, health & medical support, disease prevention, transportation of victims, delivery fees; Crisis Counseling = crisis call lines, supplemental funds to state & local mental health agencies; Housing Assistance = hotels, rental assistance, home repair assistance; Infrastructure = inspections, rebuilding public facilities. Data for 10/20/2005 included Rita, so was not included.

**Table 30b: Total FEMA Allocations and Obligations, by Type: M-U**

Date		Manufactured Housing	Mitigation	Operations	Other Needs Assistance	Unemployment Assistance
9/14/2005	Allocations	3,631,453,965	10,040,000	2,718,900,000	40,000,000	19,343,320
	Obligations	1,345,390,779	199,998	2,728,421,000	40,000,000	3,450,000
9/21/2005	Allocations	4,023,753,965	15,040,000	3,115,900,000	76,000,000	24,343,320
	Obligations	1,577,256,158	199,998	2,898,549,500	61,000,000	13,450,000
9/28/2005	Allocations	3,937,253,965	15,040,000	3,464,334,999	86,000,000	54,097,640
	Obligations	1,761,327,191	199,998	3,193,459,500	86,000,000	48,800,000
10/6/2005	Allocations	2,336,424,953	12,649,721	3,569,750,500	1,633,000,000	48,800,000
	Obligations	2,277,032,333	11,399,721	3,509,351,246	153,000,000	48,800,000
10/13/2005	Allocations	3,159,950,391	14,837,034	3,607,250,500	338,000,000	48,800,000
	Obligations	2,306,963,567	11,587,034	3,568,483,713	338,000,000	48,800,000
10/27/2005	Allocations	3,506,862,811	16,193,227	4,523,750,500	338,000,000	105,025,748
	Obligations	2,608,034,569	12,893,227	4,188,802,713	338,000,000	77,052,248
11/3/2005	Allocations	3,747,609,950	17,193,227	4,592,450,500	337,999,917	125,025,748
	Obligations	2,765,976,604	12,893,227	4,259,892,713	337,999,917	123,952,248
11/10/2005	Allocations	3,747,581,429	19,193,227	4,606,450,500	731,999,917	125,025,748
	Obligations	2,788,979,687	12,893,227	4,298,992,513	711,999,917	123,952,248
11/17/2005	Allocations	3,816,181,429	19,193,227	4,622,215,500	732,001,268	178,952,248
	Obligations	2,853,319,885	12,893,227	4,300,057,513	732,001,268	133,952,248
11/24/2005	Allocations	3,840,181,429	19,193,227	4,622,210,500	806,001,268	178,952,248
	Obligations	2,914,485,450	12,893,227	4,353,626,983	756,001,268	188,952,248
12/1/2005	Allocations	3,977,427,137	19,193,227	4,622,210,500	905,987,205	178,952,248
	Obligations	2,937,851	14,692,916	4,353,626,983	905,987,205	188,952,248
12/8/2005	Allocations	4,154,427,137	19,193,227	4,551,459,351	975,987,205	188,957,048
	Obligations	2,992,571,427	14,692,916	4,337,026,209	975,987,205	188,952,248
12/15/2005	Allocations	4,205,244,937	19,193,227	4,861,191,839	975,487,205	188,957,048
	Obligations	3,126,873,698	14,692,916	4,371,026,209	975,487,205	188,952,248
12/21/2005	Allocations	4,488,659,316	19,228,227	4,606,191,839	1,046,466,913	188,957,048
	Obligations	3,334,955,101	14,692,916	4,375,476,209	1,046,466,913	188,952,248
12/28/2005	Allocations	4,678,624,316	19,228,227	4,606,191,839	1,112,466,913	198,979,104
	Obligations	3,481,565,546	14,692,916	4,375,476,209	1,112,466,913	198,952,248
1/5/2006	Allocations	4,731,965,516	19,303,227	4,606,191,839	1,277,450,210	198,979,104
	Obligations	3,482,013,026	14,692,916	4,375,476,209	1,277,450,210	198,952,248
2/1/2006	Allocations	5,085,174,797	28,333,907	4,467,366,898	1,403,350,462	214,204,814
	Obligations	3,622,559,220	19,823,596	4,417,290,209	1,403,350,462	214,177,958
3/1/2006	Allocations	5,380,137,007	29,248,907	4,450,038,410	1,482,232,445	221,184,814
	Obligations	3,876,403,731	19,823,596	4,405,290,209	1,482,232,445	221,527,958
4/5/2006	Allocations	6,397,828,357	42,813,325	4,688,137,911	1,612,920,823	365,888,258
	Obligations	4,761,737,214	30,718,755	4,657,361,209	1,612,920,823	329,162,166
5/3/2006	Allocations	6,410,088,123	34,486,147	4,864,152,911	1,708,843,874	403,138,258
	Obligations	4,747,166,983	22,391,577	4,862,996,215	1,705,843,874	387,362,166
6/7/2006	Allocations	7,339,529,227	45,414,345	4,899,652,911	1,792,898,476	423,459,491
	Obligations	5,026,775,796	35,467,606	4,907,316,215	1,792,898,476	410,183,399
7/5/2006	Allocations	7,572,980,897	44,292,820	5,014,152,911	1,810,845,325	423,459,491
	Obligations	5,798,564,808	37,311,153	5,001,209,776	1,810,845,325	410,183,399
8/2/2006	Allocations	7,453,980,897	44,292,820	5,012,726,089	1,845,502,323	423,459,491
	Obligations	6,423,783,829	36,685,648	5,002,049,653	1,845,491,853	410,183,399
9/6/2006	Allocations	7,499,600,897	55,931,097	5,006,062,140	1,851,489,314	423,459,491
	Obligations	6,482,366,205	46,065,469	4,988,117,704	1,851,489,214	410,183,399
10/4/2006	Allocations	6,960,259,684	50,397,240	4,630,516,172	1,820,368,401	410,183,399
	Obligations	6,895,234,684	50,397,240	4,630,016,172	1,816,668,401	410,183,399

Source: FEMA Katrina Hurricane Disaster Weekly Report.

Notes: Manufactured Housing = travel trailers, mobile homes; Mitigation = inspections, hazard mitigation; Operations = technical expertise and goods and services assistance to states; Other Needs Assistance = medical, dental, funeral, transportation, and other disaster-related costs. Data for 10/20/2005 included Rita, so was not included.

**Table 31: Number of Occupied Mobile Homes & Travel Trailers in Louisiana**

Date	Mobile Homes	Travel Trailers
10/20/05	57	2,883
10/31/05	337	4,355
11/03/05	Not available	Not available
11/10/05	519	6,535
11/24/05	667	11,378
12/01/05	670	13,184
12/15/05	Not available	Not available
12/21/05	822	20,977
12/29/05	850	22,994
01/09/06	854	27,033
01/17/06	1,523	26,373
01/28/06	1,738	31,240
02/15/06	1,975	38,474
02/27/06	2,171	43,517
03/08/06	1,792	48,584
03/22/06	2,638	52,291
04/28/06	2,682	62,843
05/28/06	3,057	68,156
06/26/06	3,248	70,437
07/24/06	3,543	73,214
08/25/06	4,572	70,579
09/25/06	4,647	68,673
10/27/06	4,648	66,389
12/08/06	4,570	60,389
01/16/07	4,635	59,382
02/12/07	4,668	56,743
04/03/07	4,525	51,173

Sources: FEMA Louisiana Field Office, FEMA News Desk.

**Table 32: Cumulative Number of Households Approved for Housing & Rental Assistance through the FEMA Individuals and Households Program**

Date	Households Approved for Housing Assistance	Households Approved for Rental Assistance
11/11/05	904,221	Not available
12/22/05	911,473	Not available
01/27/06	924,330	Not available
02/09/06	931,180	645,400
03/08/06	937,882	654,319
04/09/06	942,416	658,706
04/30/06	944,141	660,434
05/07/06	944,440	660,837
06/05/06	945,931	662,168
06/26/06	946,597	678,350
07/24/06	947,404	679,847
08/15/06	947,788	680,586
09/25/06	948,238	681,303
10/30/06	948,565	681,705
12/04/06	948,707	681,935
01/16/07	948,856	682,172
01/22/07	948,879	682,217
01/29/07	948,896	682,256
02/06/07	948,908	682,282
02/13/07	948,926	682,308
02/20/07	948,940	682,338
02/27/07	948,948	682,349
03/06/07	948,964	682,370
03/12/07	948,969	682,376
03/19/07	948,985	682,394
03/27/07	948,989	682,399
04/03/07	948,992	682,413

Source: FEMA News Desk.

Notes: FEMA informed us in April 2006 that the number of households previously reported to be receiving rental assistance no longer fit that category. We have updated all of the numbers in this table to reflect this change. The housing assistance category in this table encompasses rental assistance, travel trailers/mobile homes, and assistance for personal housing repairs.